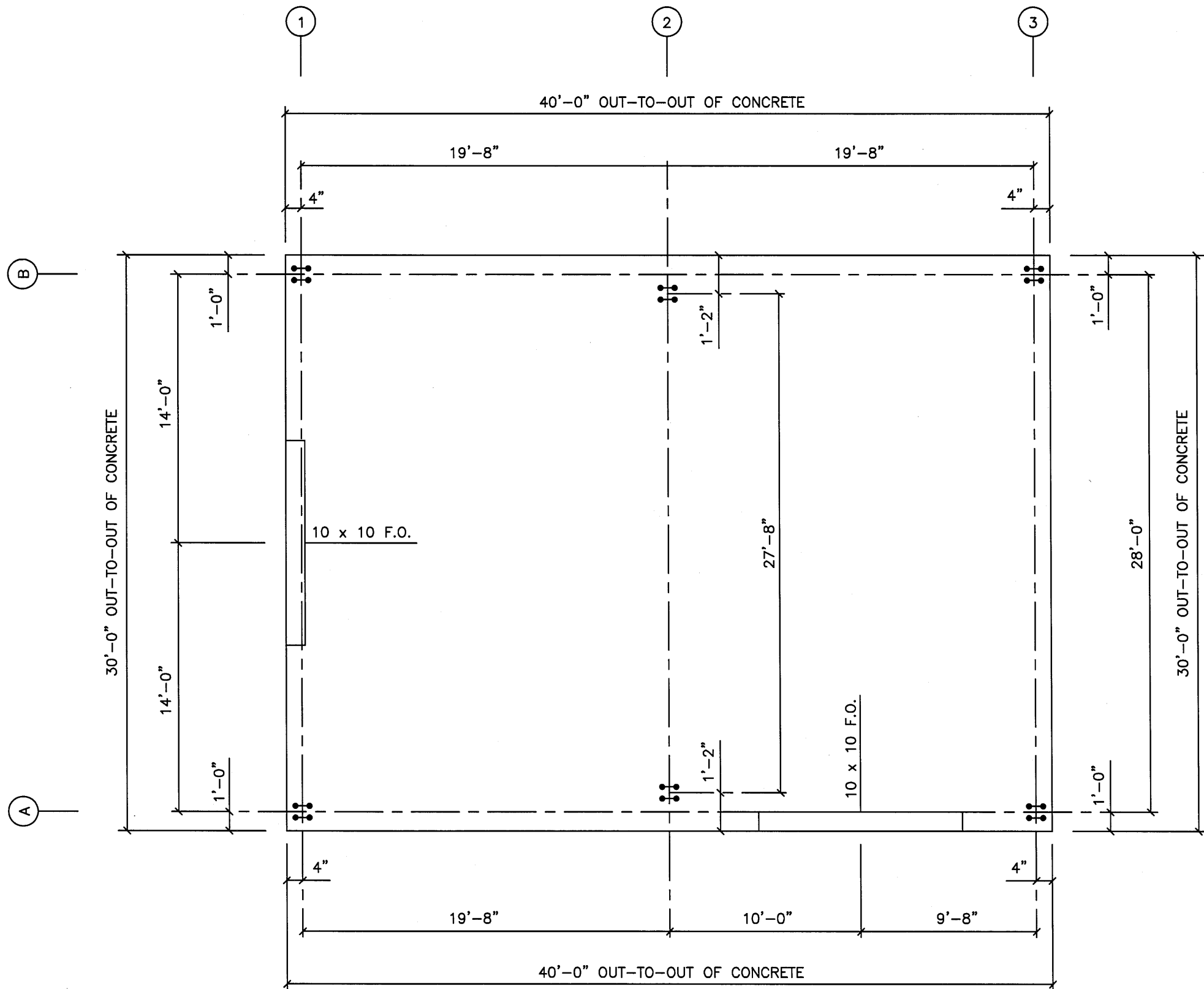


BLDG. SIZE: 30 x 40 x 12 (1:12 PITCH)

AB1 of 1 – Anchor Bolt Plan
F1 of 1 – Foundation Plan
1 of 3 – Roof Framing Plan
2 of 3 – Sidewall Framing Elev.
3 of 3 – Endwall Framing Elev.
SH1 of 3 – Roof Sheeting Plan
SH2 of 3 – Sidewall Sheeting Elev.
SH3 of 3 – Endwall Sheeting Elev.



590 US HWY 98
SUITE 3
DAPHNE, AL 36526
LOCAL (251) 379-8042
TOLL FREE (855) 55-VALOR
www.valorsteelbuildings.com

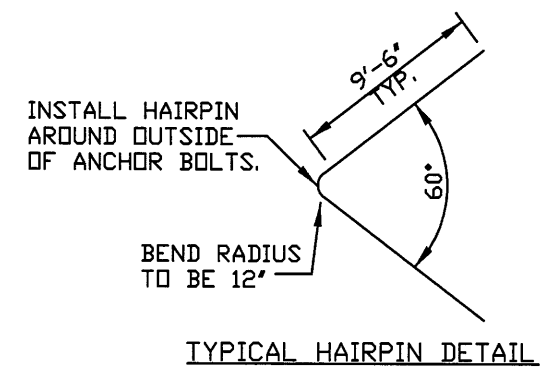
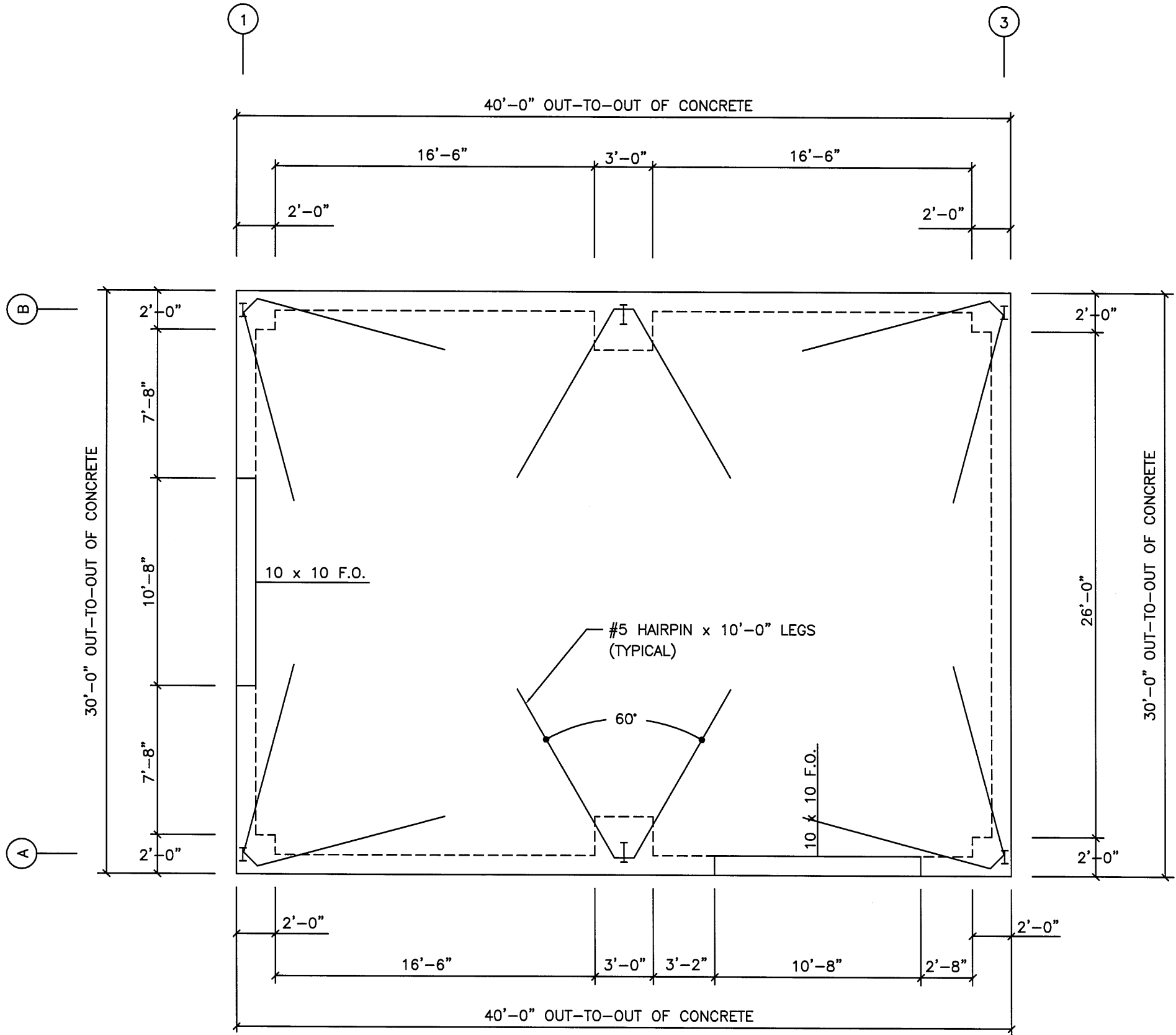


ANCHOR BOLT PLAN
N.T.S.




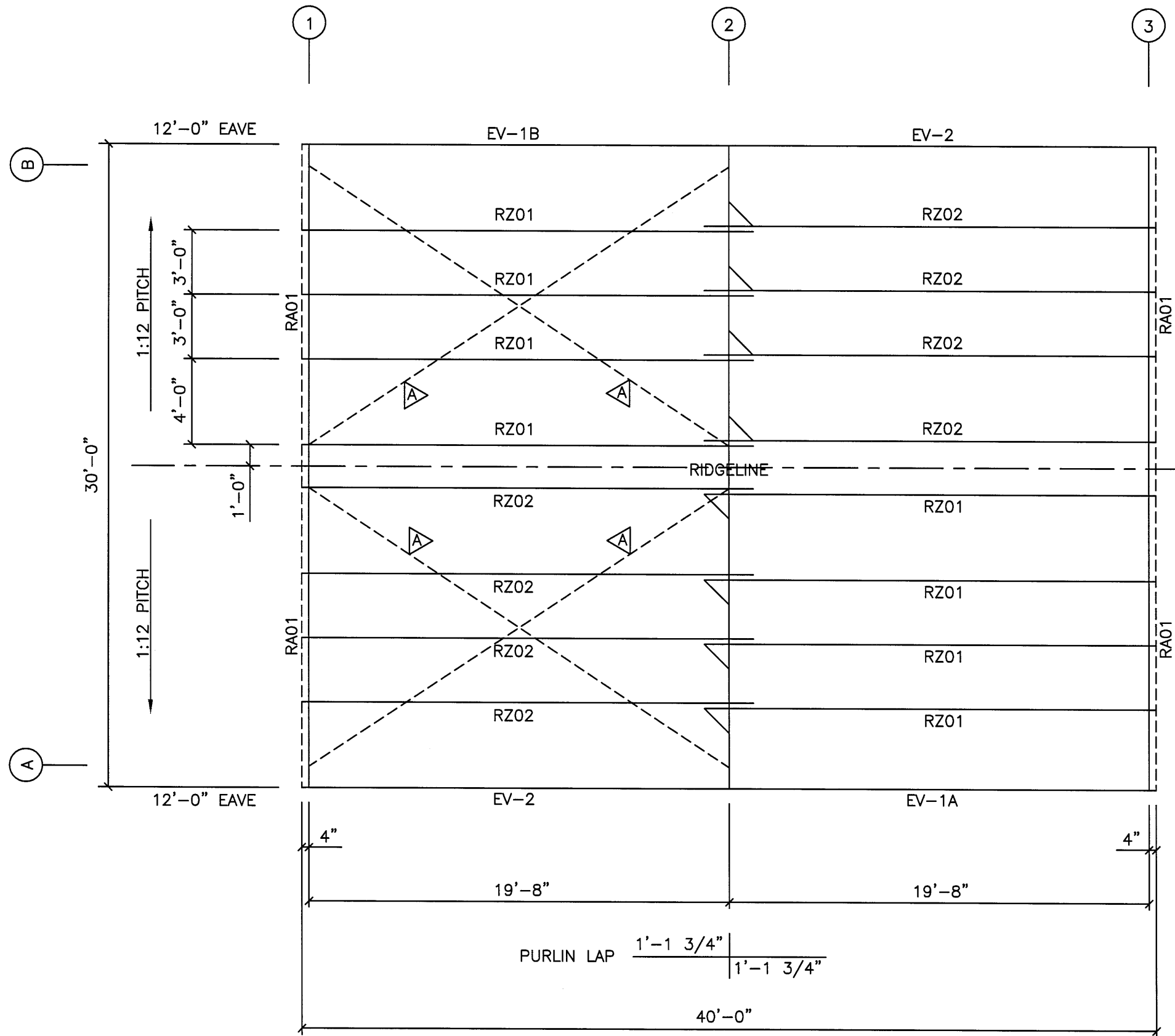
VALOR STEEL BUILDINGS
590 US HWY 98 - SUITE 3
DAPHNE, AL 36526
LOCAL (251) 379-8042
TOLL FREE (855) 55-VALOR
www.valorsteelbuildings.com


Bldg. Size: 30 x 40 x 12



FOUNDATION PLAN
N.T.S

	STEEL BUILDINGS	VALOR STEEL BUILDINGS 590 US HWY 98 - SUITE 3 DAPHNE, AL 36526 LOCAL (251) 379-8042 TOLL FREE (855) 55-VALOR www.valorsteelbuildings.com
		Bldg. Size: 30 x 40 x 12



 CABLE BRACING

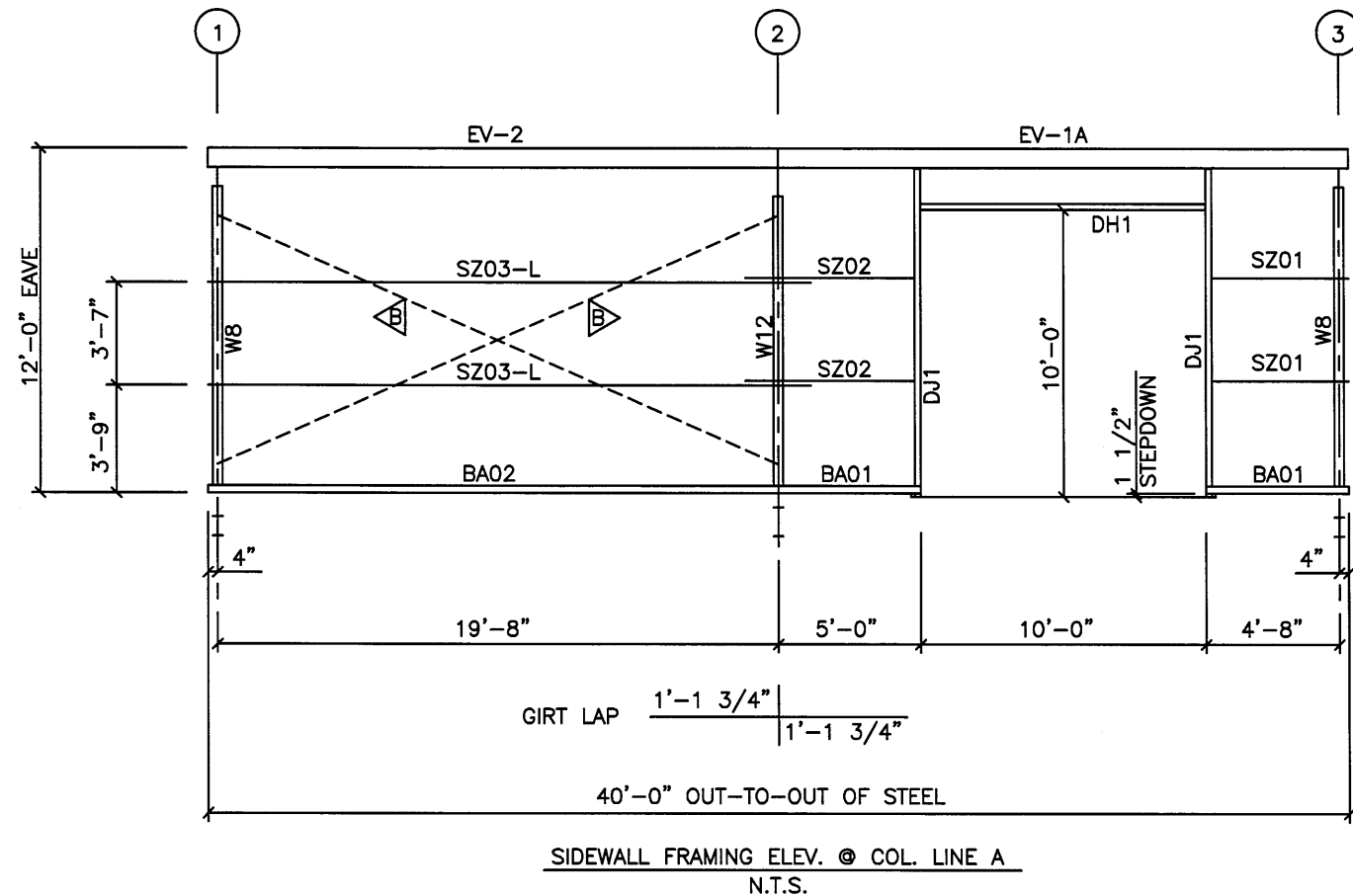
ROOF FRAMING PLAN
N.T.S.



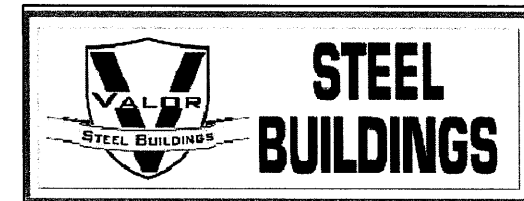
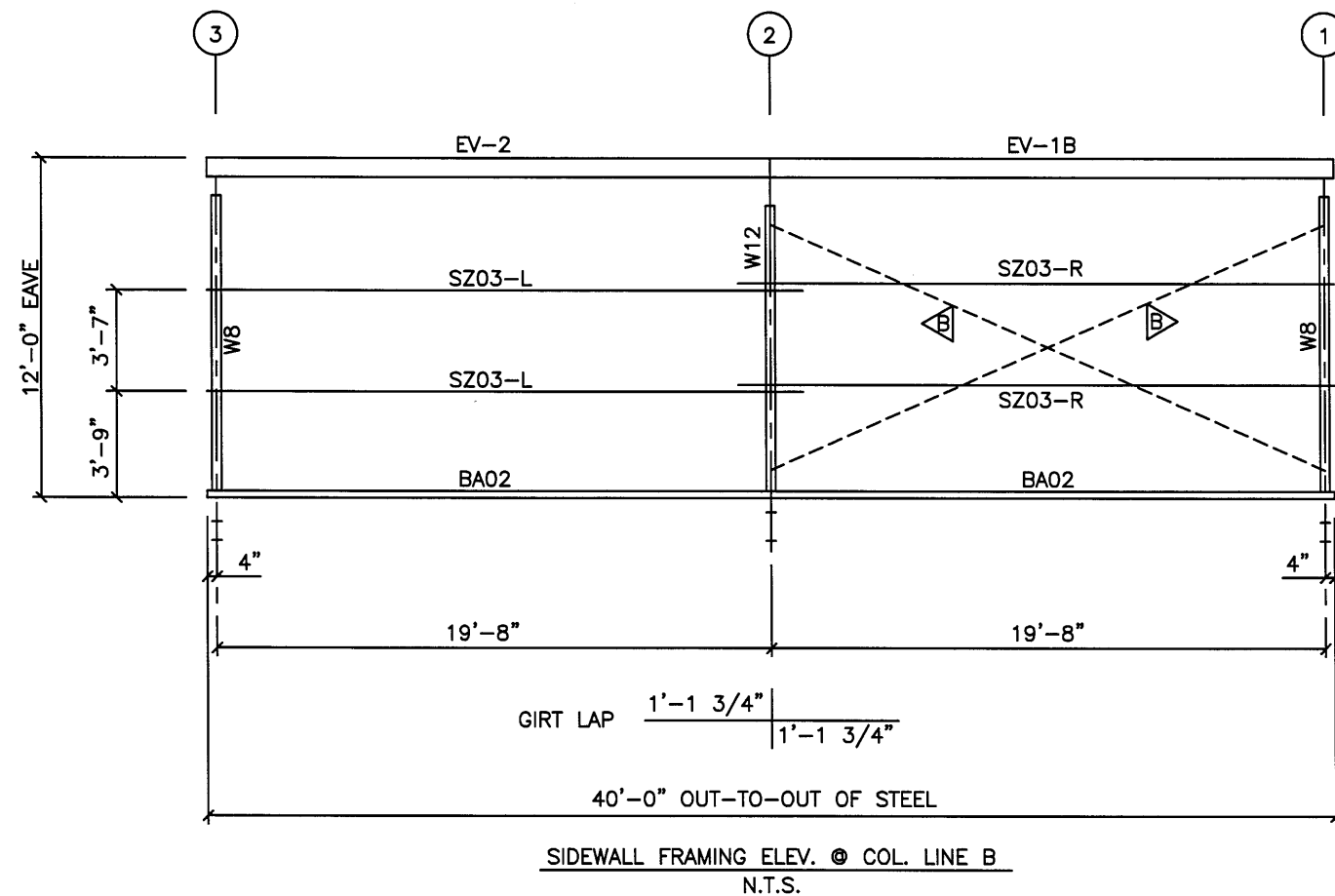
STEEL BUILDINGS

VALOR STEEL BUILDINGS
590 US HWY 98 - SUITE 3
DAPHNE, AL 36526
LOCAL (251) 379-8042
TOLL FREE (855) 55-VALOR
www.valorsteelbuildings.com

Bldg. Size: 30 x 40 x 12



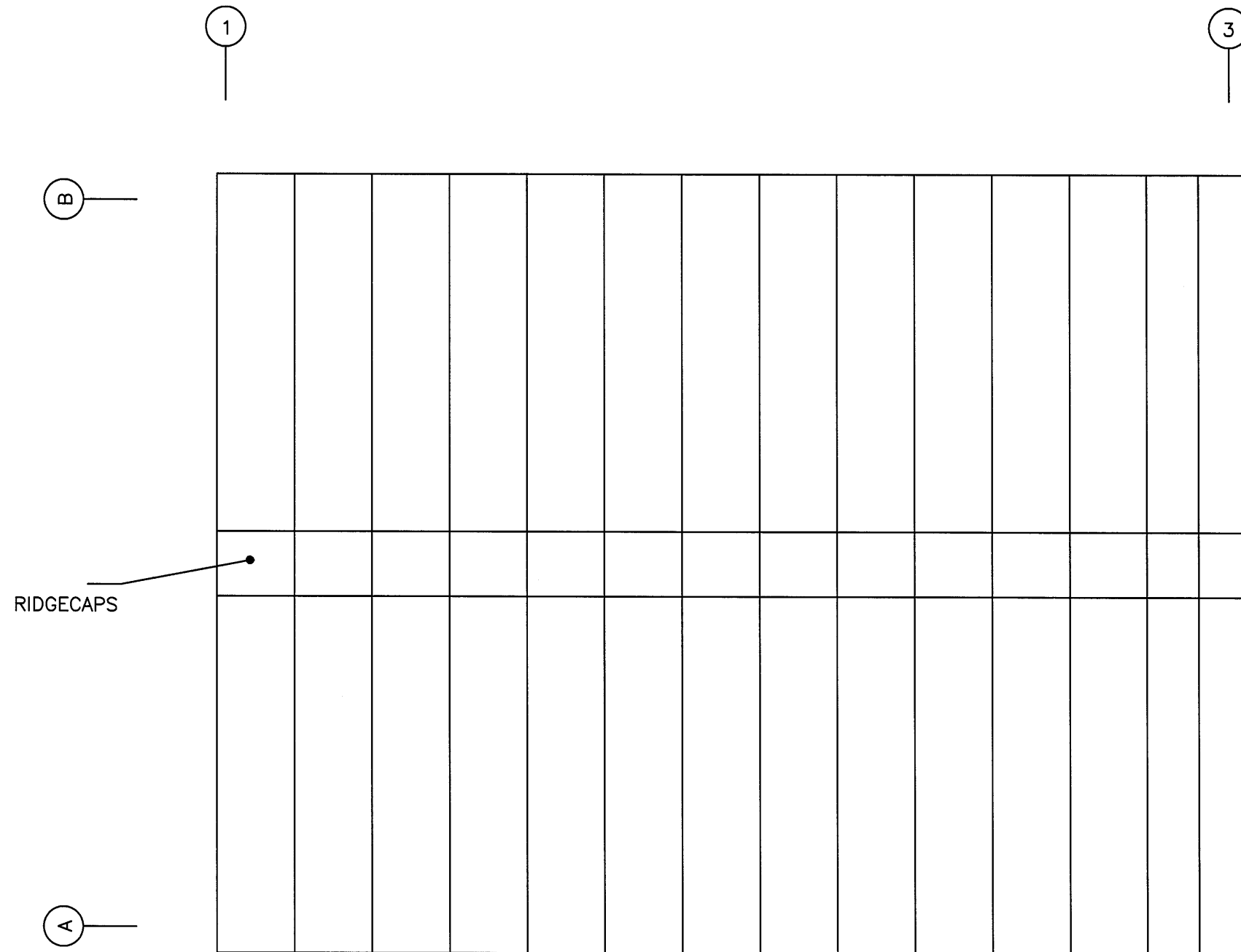
CABLE BRACING



STEEL BUILDINGS

VALOR STEEL BUILDINGS
590 US HWY 98 - SUITE 3
DAPHNE, AL 36526
LOCAL (251) 379-8042
TOLL FREE (855) 55-VALOR
www.valorsteelbuildings.com

Bldg. Size: 30 x 40 x 12



ROOF SHEETING PLAN
N.T.S.

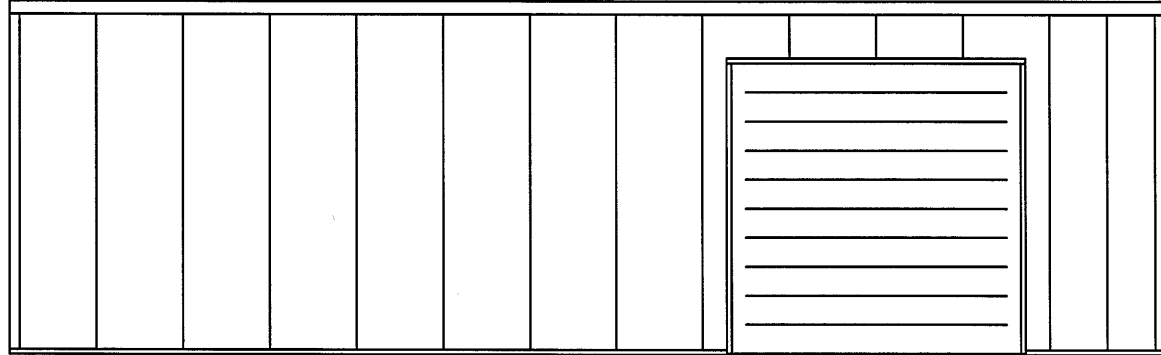


VALOR STEEL BUILDINGS
590 US HWY 98 - SUITE 3
DAPHNE, AL 36526
LOCAL (251) 379-8042
TOLL FREE (855) 55-VALOR
www.valorsteelbuildings.com

Bldg. Size: 30 x 40 x 12

1

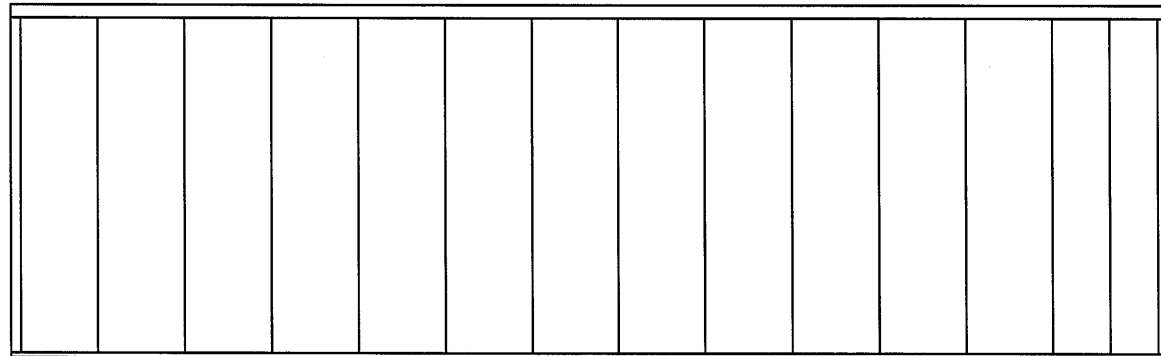
3



SIDEWALL SHEETED ELEV. @ COL. LINE A
N.T.S.

3

1



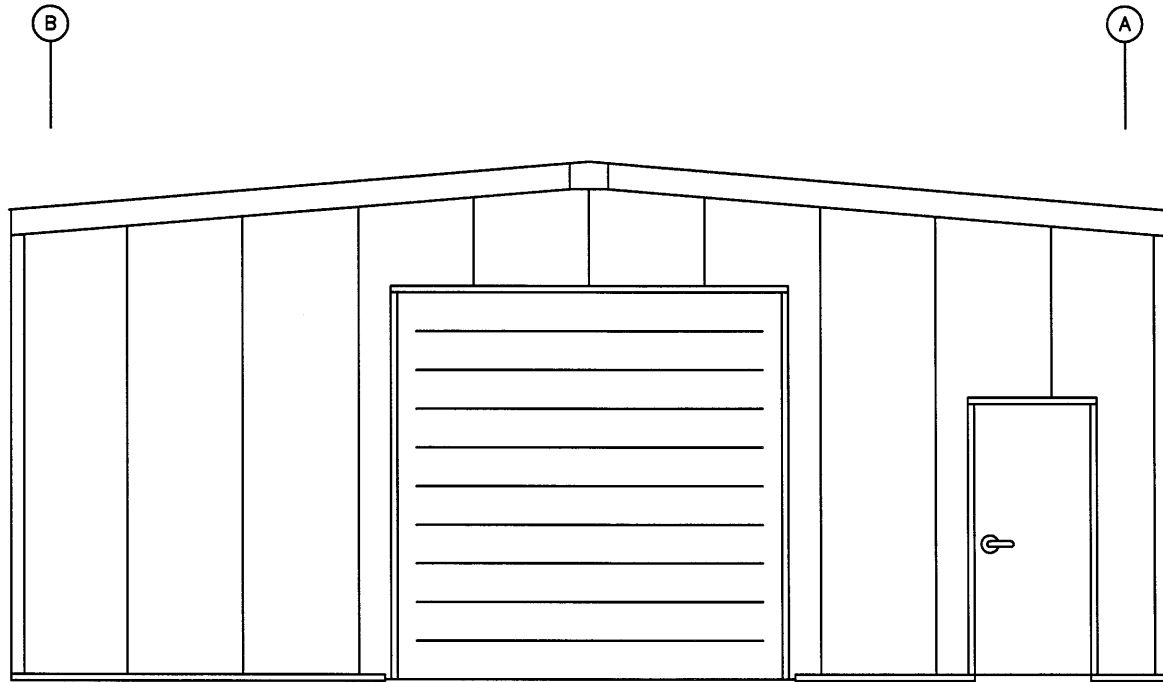
SIDEWALL SHEETED ELEV. @ COL. LINE B
N.T.S.



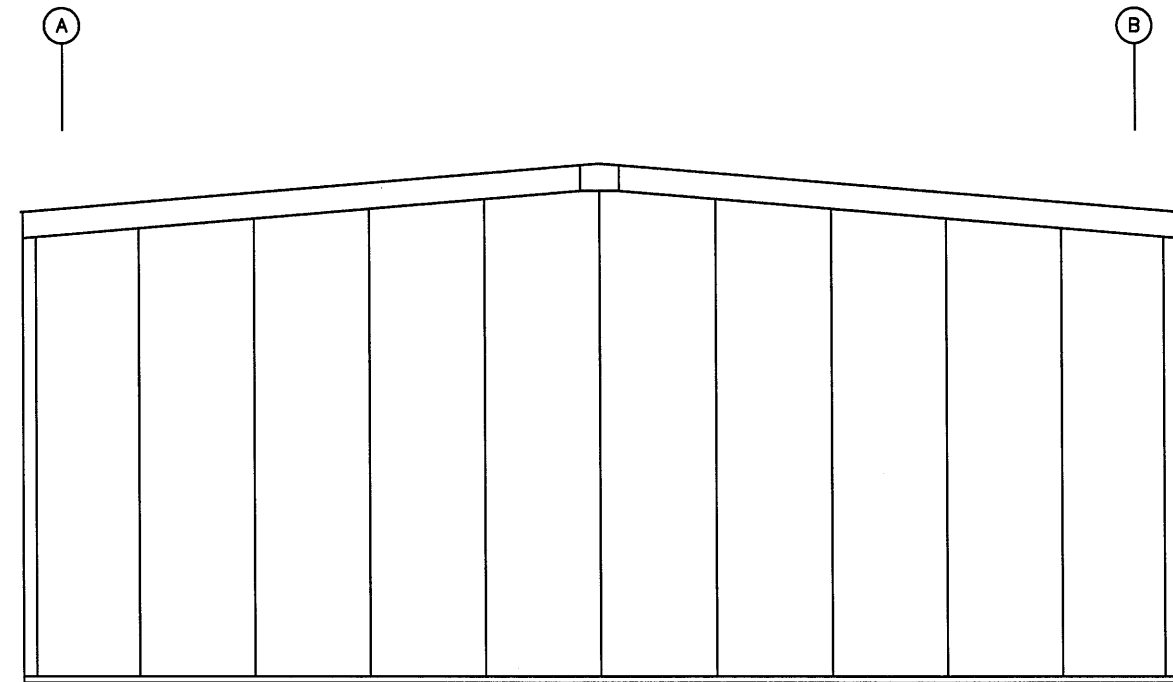
**STEEL
BUILDINGS**

VALOR STEEL BUILDINGS
590 US HWY 98 - SUITE 3
DAPHNE, AL 36526
LOCAL (251) 379-8042
TOLL FREE (855) 55-VALOR
www.valorsteelbuildings.com

Bldg. Size: 30 x 40 x 12



ENDWALL SHEETED ELEV. ● COL. LINE 1
N.T.S.



ENDWALL SHEETED ELEV. ● COL. LINE 3
N.T.S.



VALOR STEEL BUILDINGS
590 US HWY 98 - SUITE 3
DAPHNE, AL 36526
LOCAL (251) 379-8042
TOLL FREE (855) 55-VALOR
www.valorsteelbuildings.com

Bldg. Size: 30 x 40 x 12