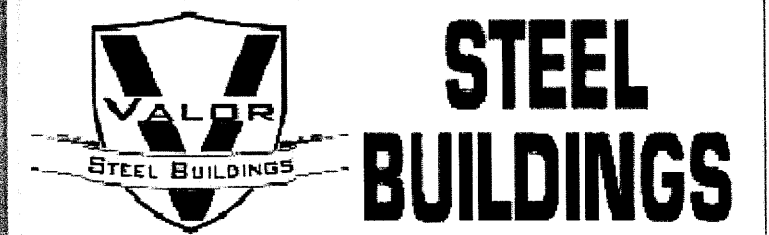
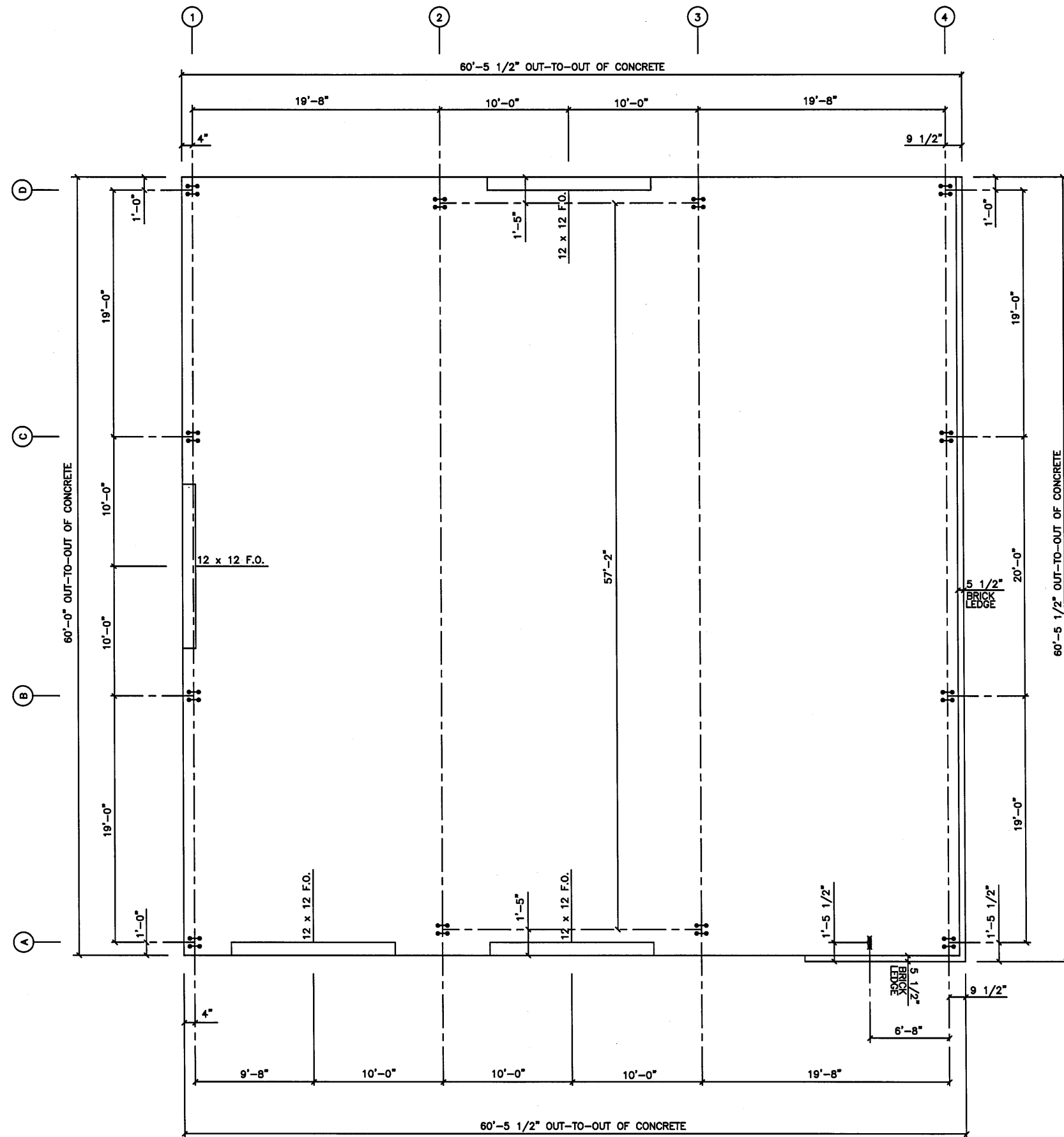


BLDG. SIZE: 60 x 60 x 14  
(1:12 PITCH)

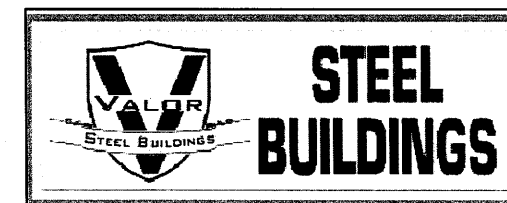
AB1 of 1 — Anchor Bolt Plan  
F1 of 1 — Foundation Plan  
1 of 4 — Roof Framing Plan  
2 of 4 — Sidewall Framing Elev.  
3 of 4 — Endwall Framing Elev.  
4 of 4 — Rigid Framing Elev.  
SH1 of 3 — Roof Sheeting Plan  
SH2 of 3 — Sidewall Sheeting Elev.  
SH3 of 3 — Endwall Sheeting Elev.



590 US HWY 98  
SUITE 3  
DAPHNE, AL 36526  
LOCAL (251) 379-8042  
TOLL FREE (855) 55-VALOR  
[www.valorsteelbuildings.com](http://www.valorsteelbuildings.com)

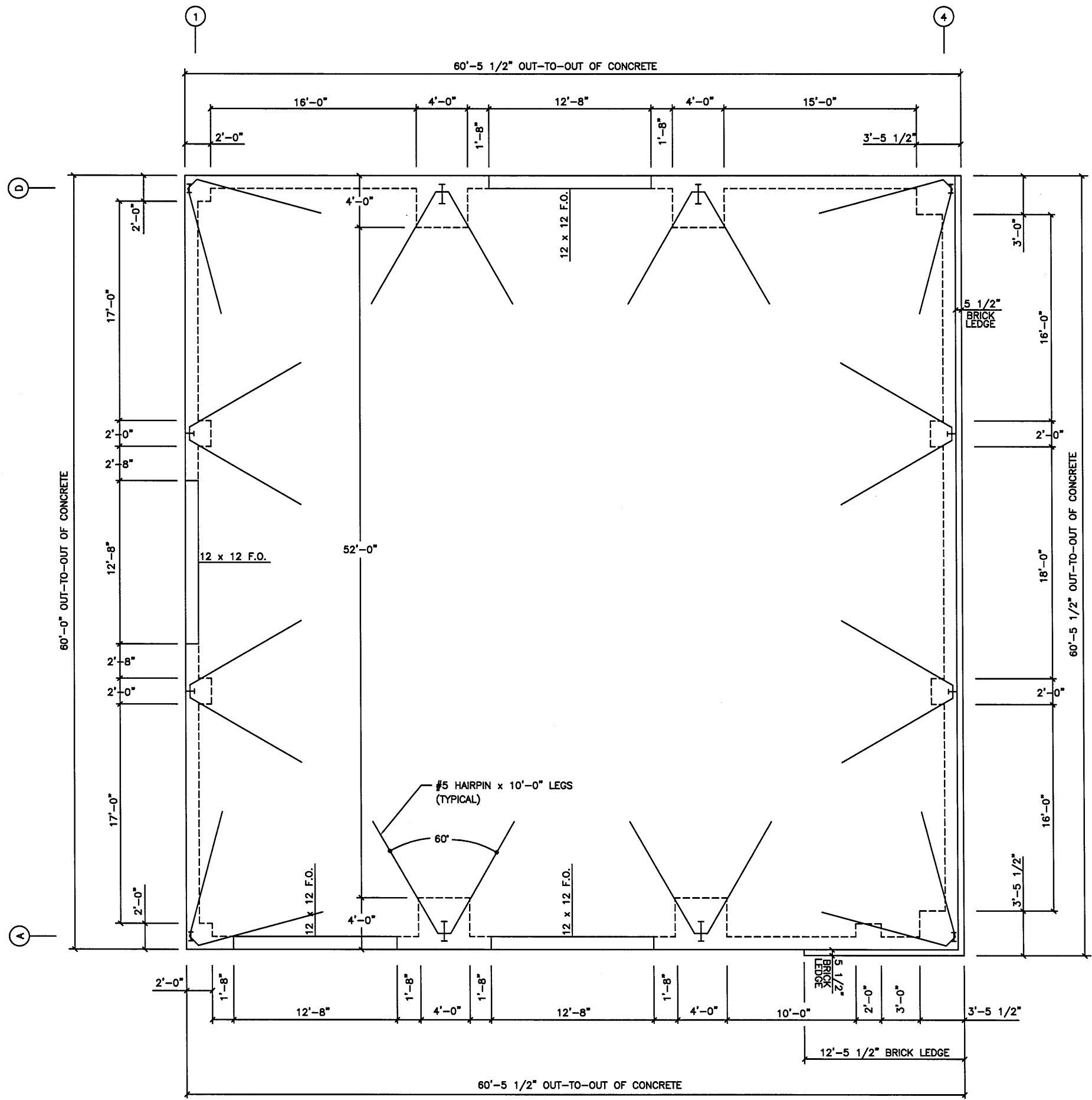


ANCHOR BOLT PLAN  
N.T.S.

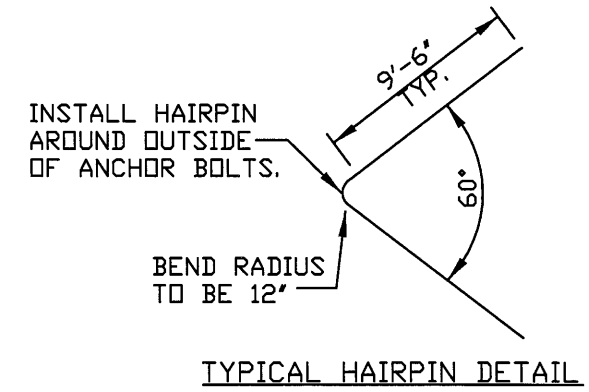


VALOR STEEL BUILDINGS  
590 US HWY 98 - SUITE 3  
DAPHNE, AL 36526  
LOCAL (251) 379-8042  
TOLL FREE (855) 55-VALOR  
www.valorsteelbuildings.com


Bldg. Size: 60 x 60 x 14



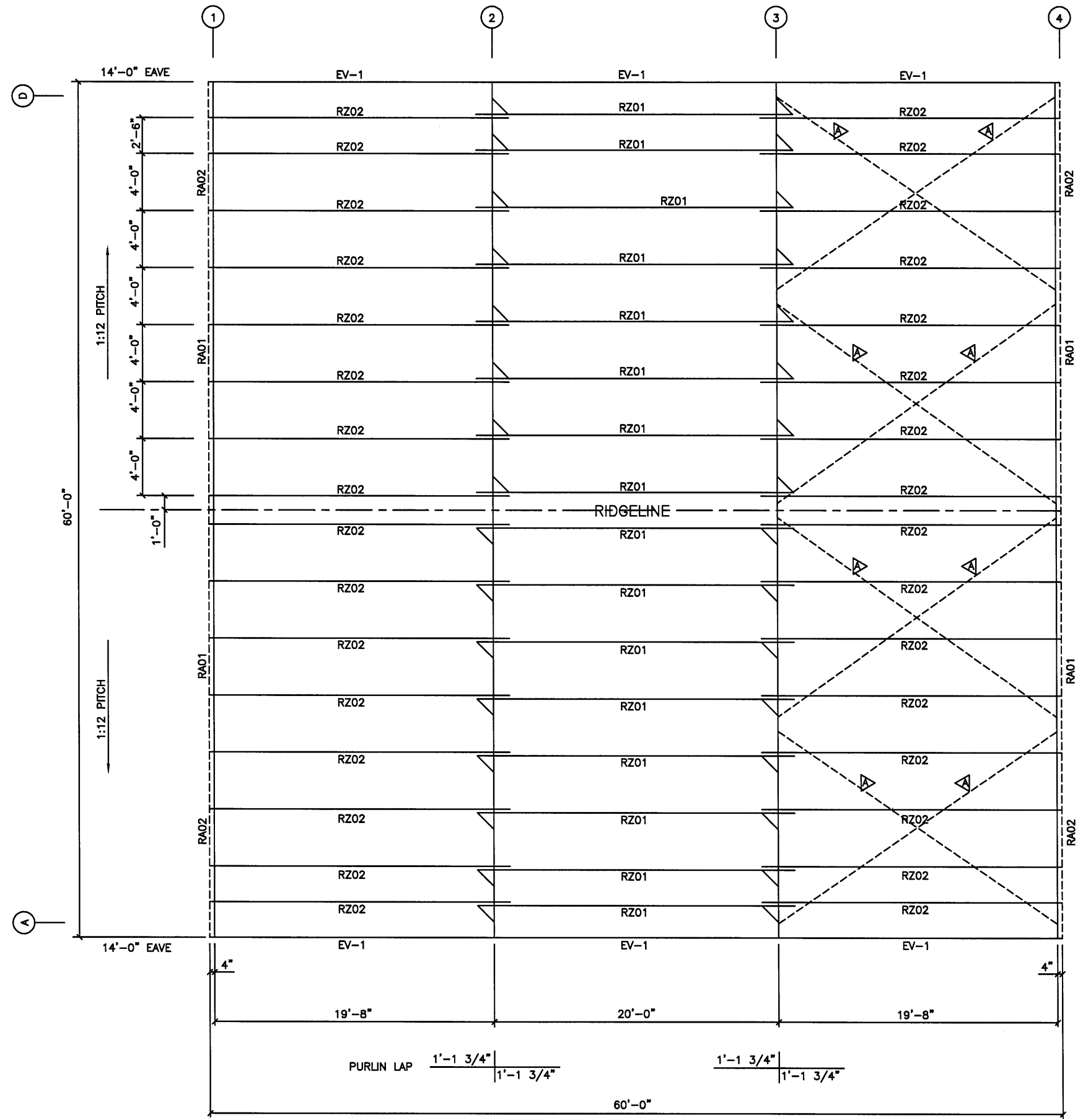
FOUNDATION PLAN  
N.T.S.



TYPICAL HAIRPIN DETAIL

 <b>STEEL BUILDINGS</b>	VALOR STEEL BUILDINGS 590 US HWY 98 - SUITE 3 DAPHNE, AL 36526 LOCAL (251) 379-8042 TOLL FREE (855) 55-VALOR www.valorsteelbuildings.com
	Bldg. Size: 60 x 60 x 14

Bldg. Size: 60 x 60 x 14



CABLE BRACING

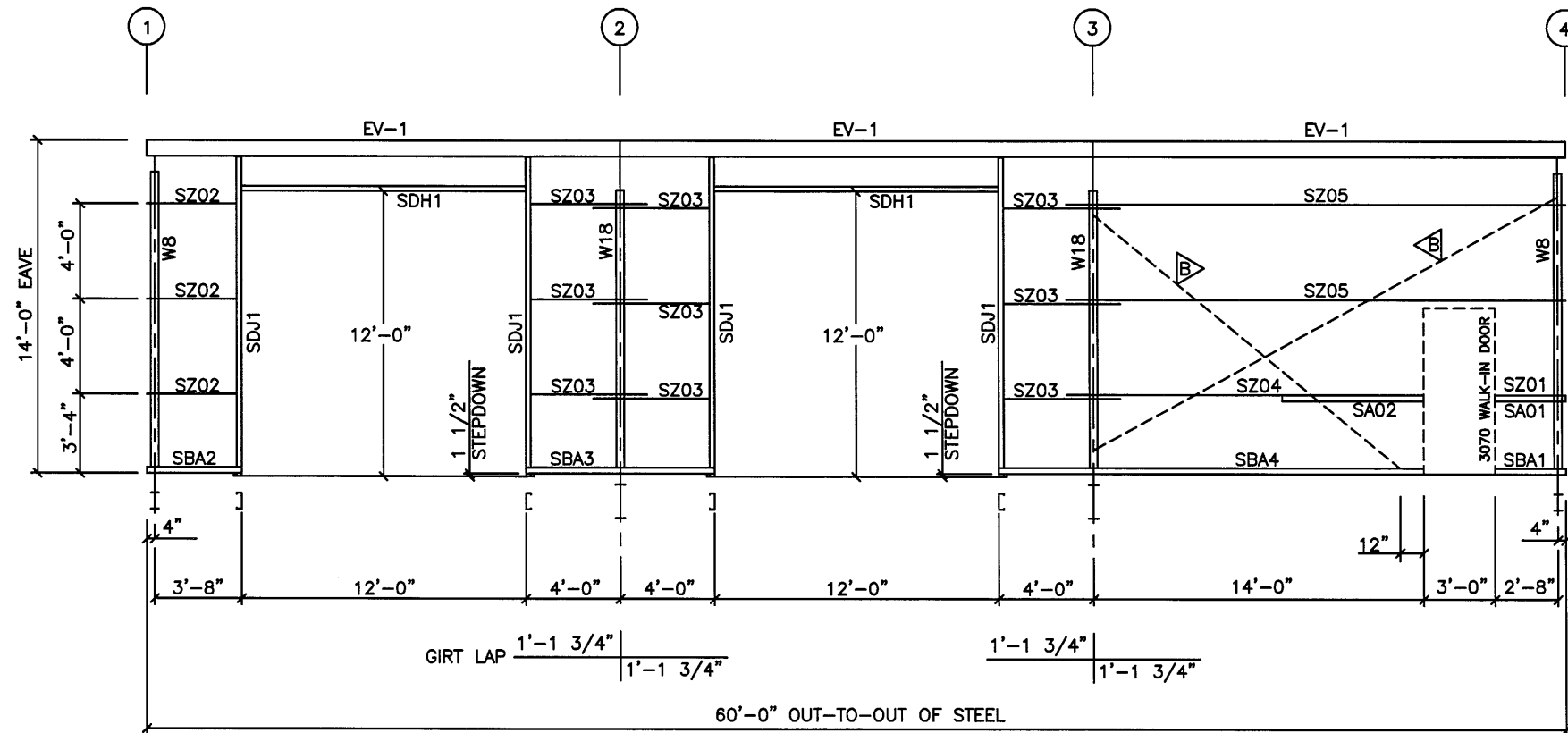


**STEEL BUILDINGS**

VALOR STEEL BUILDINGS  
 590 US HWY 98 - SUITE 3  
 DAPHNE, AL 36526  
 LOCAL (251) 379-8042  
 TOLL FREE (855) 55-VALOR  
 www.valorsteelbuildings.com

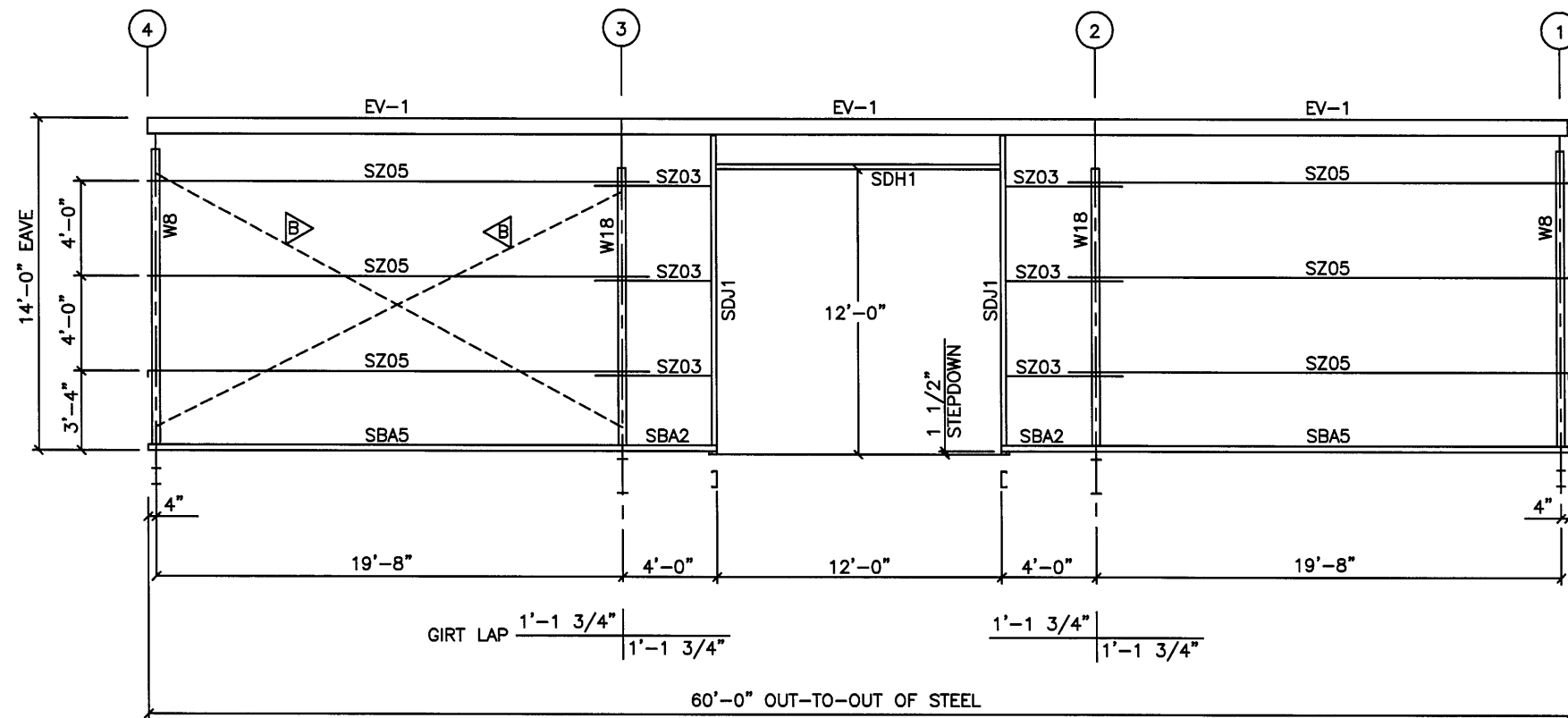
Bldg. Size: 60 x 60 x 14

ROOF FRAMING PLAN  
 N.T.S.



SIDEWALL FRAMING ELEV. @ COL. LINE A  
N.T.S.

CABLE BRACING



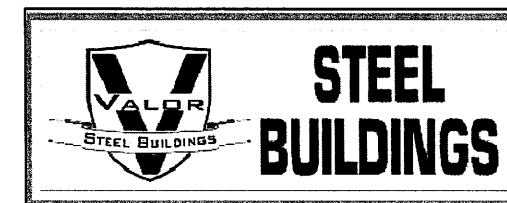
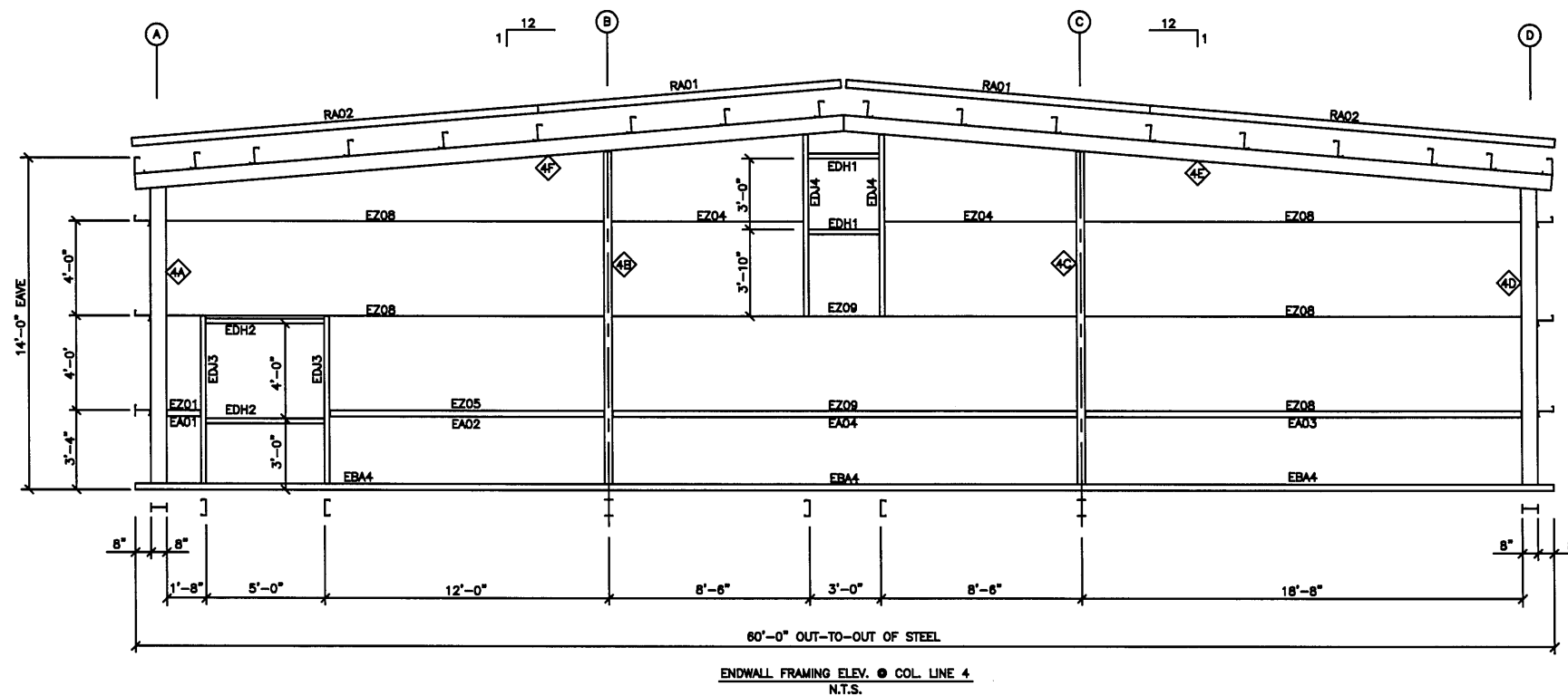
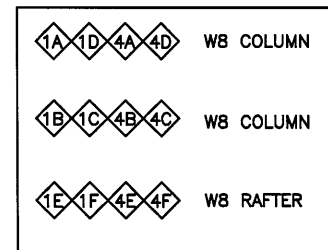
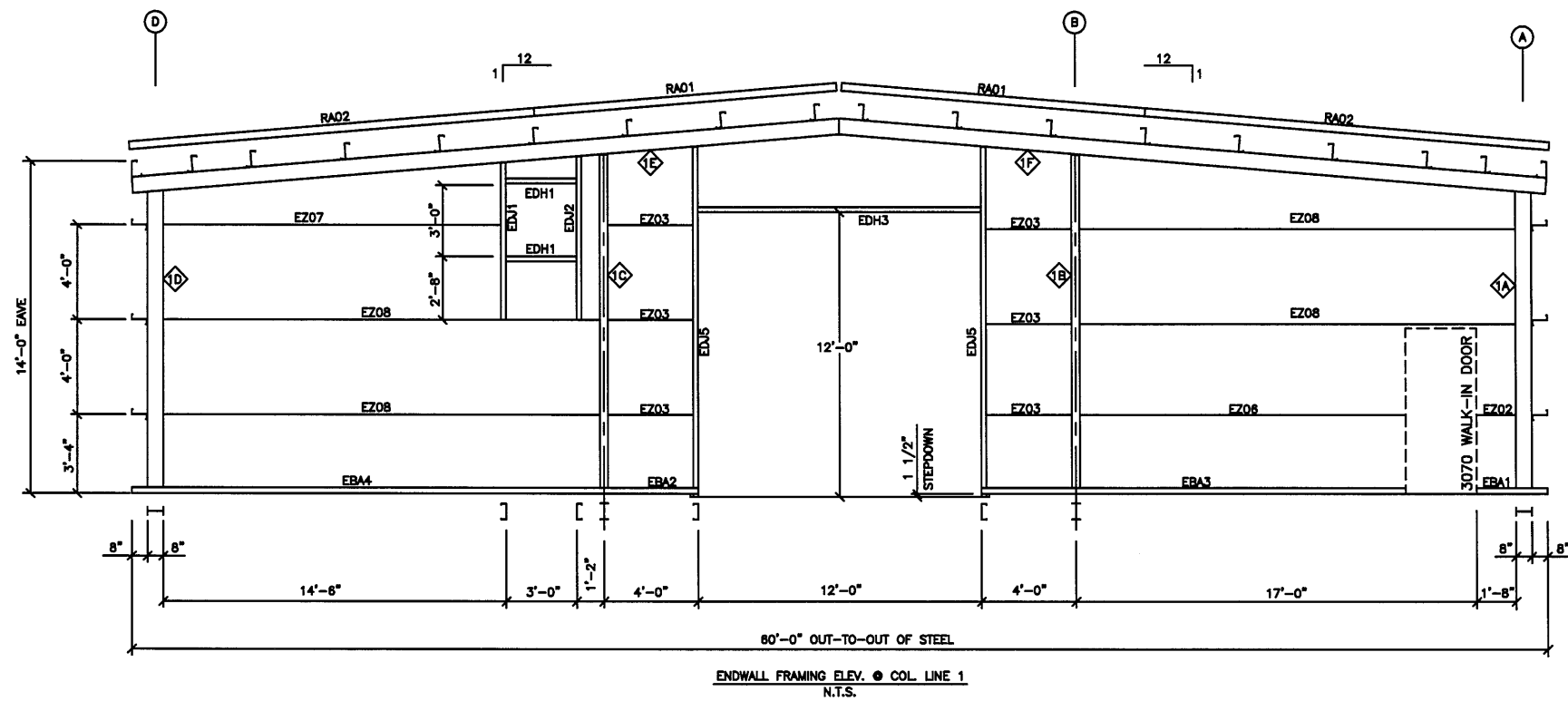
SIDEWALL FRAMING ELEV. @ COL. LINE B  
N.T.S.



**STEEL BUILDINGS**

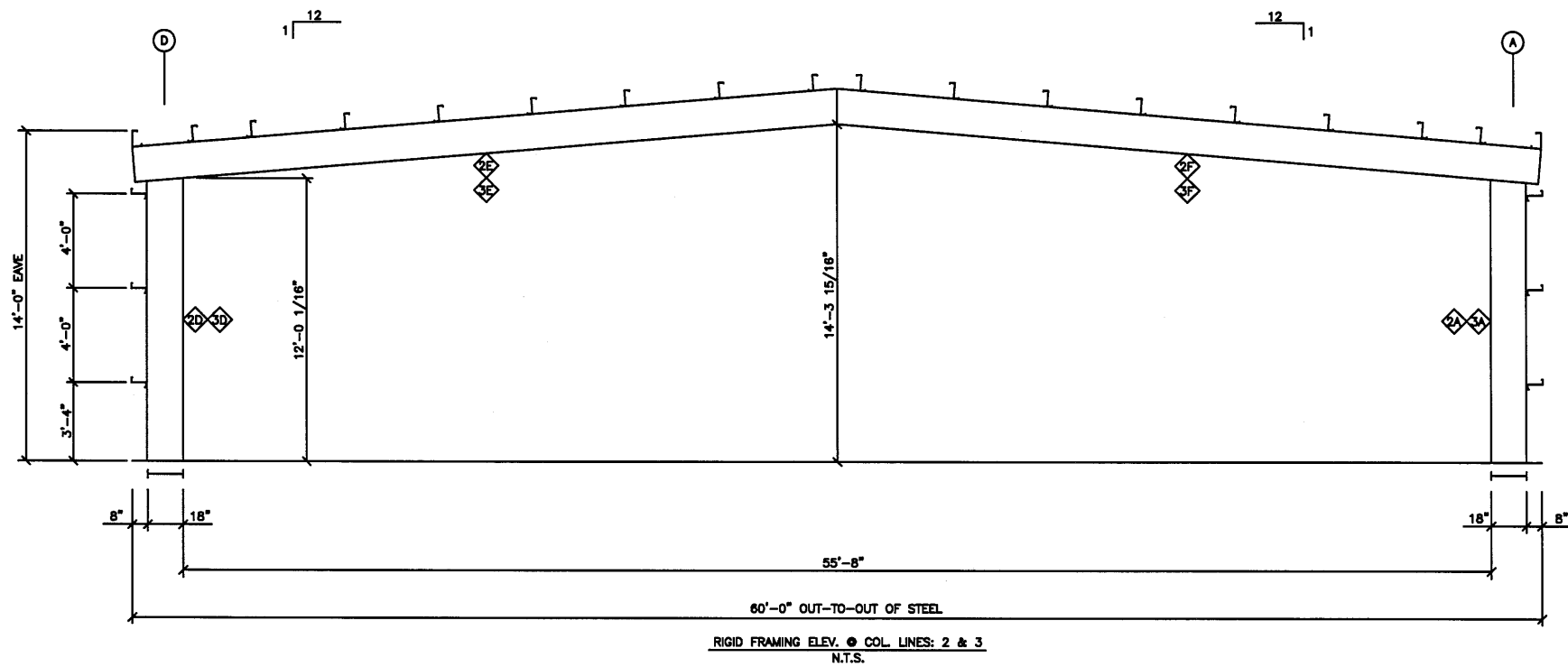
VALOR STEEL BUILDINGS  
590 US HWY 98 - SUITE 3  
DAPHNE, AL 36526  
LOCAL (251) 379-8042  
TOLL FREE (855) 55-VALOR  
www.valorsteelbuildings.com

Bldg. Size: 60 x 60 x 14



VALOR STEEL BUILDINGS  
590 US HWY 98 - SUITE 3  
DAPHNE, AL 36526  
LOCAL (251) 379-8042  
TOLL FREE (855) 55-VALOR  
www.valorsteelbuildings.com

Bldg. Size: 60 x 60 x 14



- |    |    |    |    |            |
|----|----|----|----|------------|
| 2A | 3A | 2D | 3D | W16 COLUMN |
| 2E | 2F | 3E | 3F | W18 RAFTER |



**STEEL BUILDINGS**

VALOR STEEL BUILDINGS  
 590 US HWY 98 - SUITE 3  
 DAPHNE, AL 36526  
 LOCAL (251) 379-8042  
 TOLL FREE (855) 55-VALOR  
[www.valorsteelbuildings.com](http://www.valorsteelbuildings.com)

Bldg. Size: 60 x 60 x 14

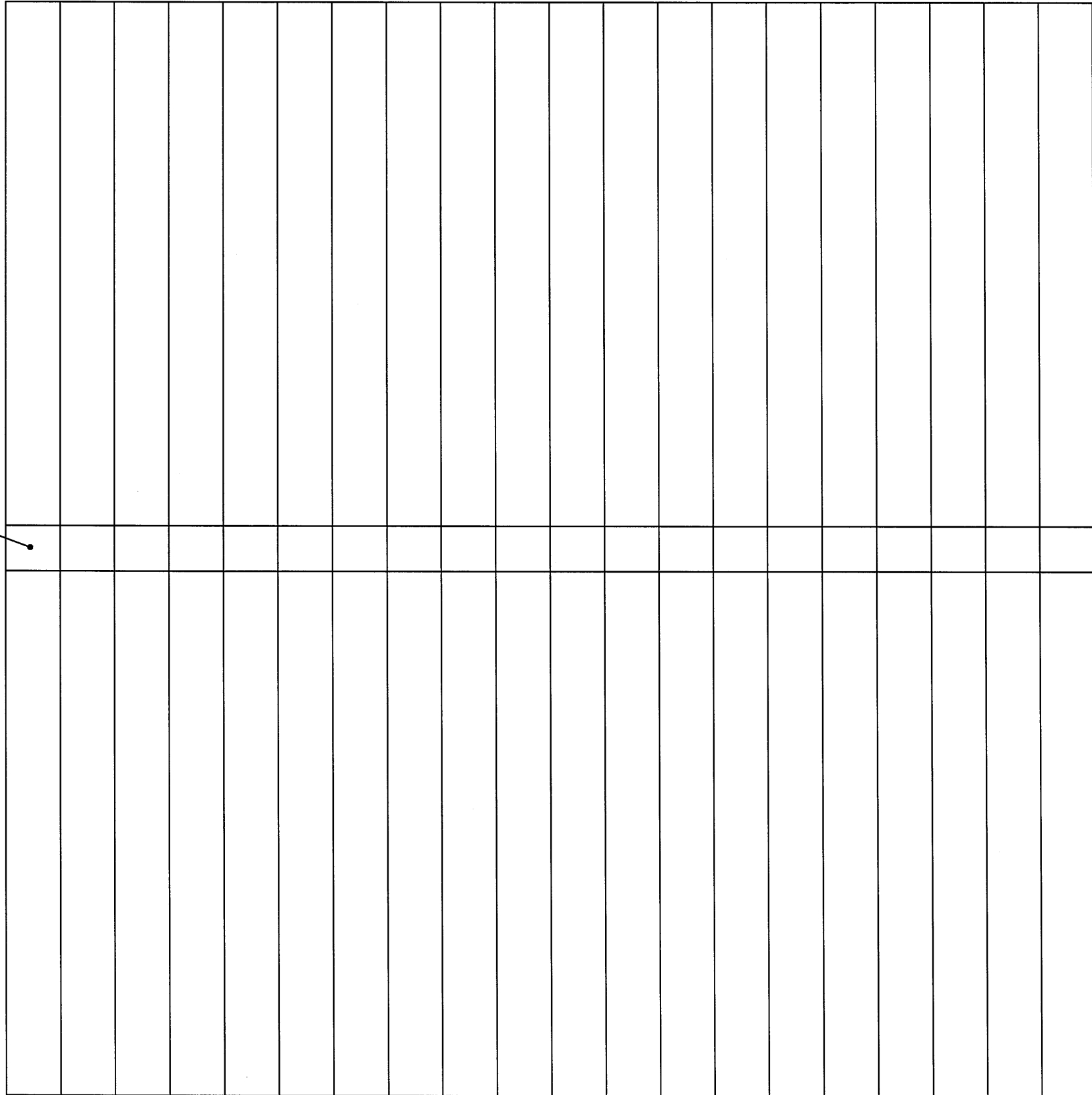
1

4

D

RIDGECAPS

A



ROOF SHEETING PLAN  
N.T.S.



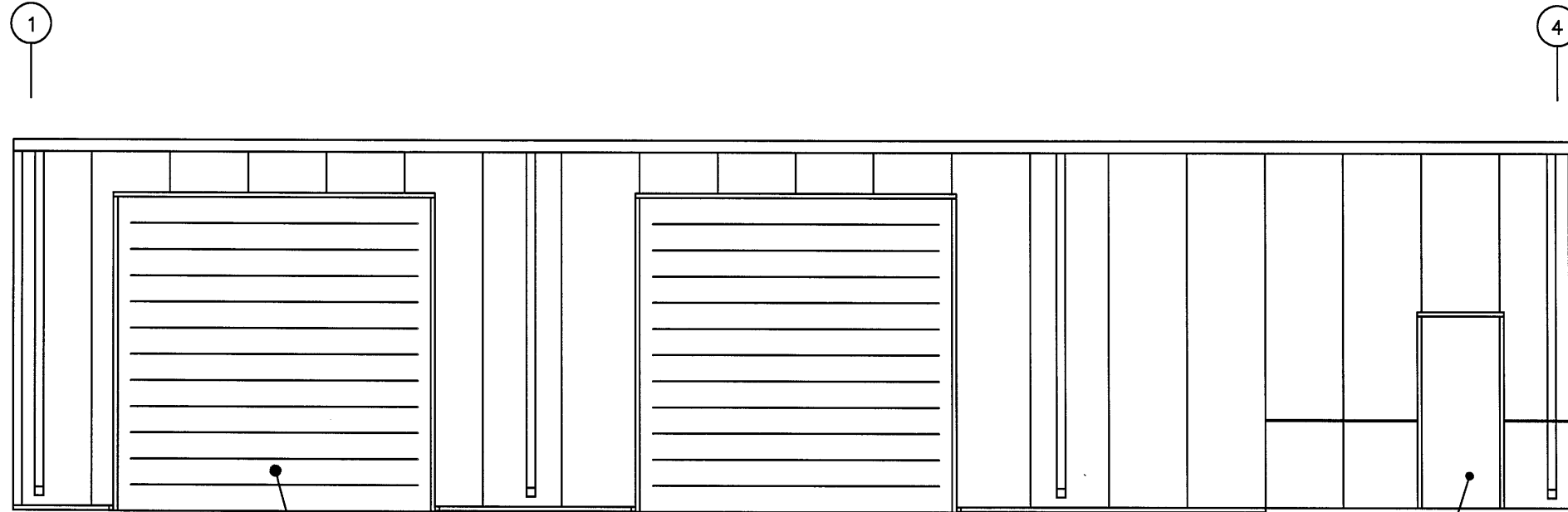
**STEEL  
BUILDINGS**

VALOR STEEL BUILDINGS  
590 US HWY 98 - SUITE 3  
DAPHNE, AL 36526  
LOCAL (251) 379-8042  
TOLL FREE (855) 55-VALOR  
www.valorsteelbuildings.com

Owner:

Bldg. Size: 60 x 60 x 14

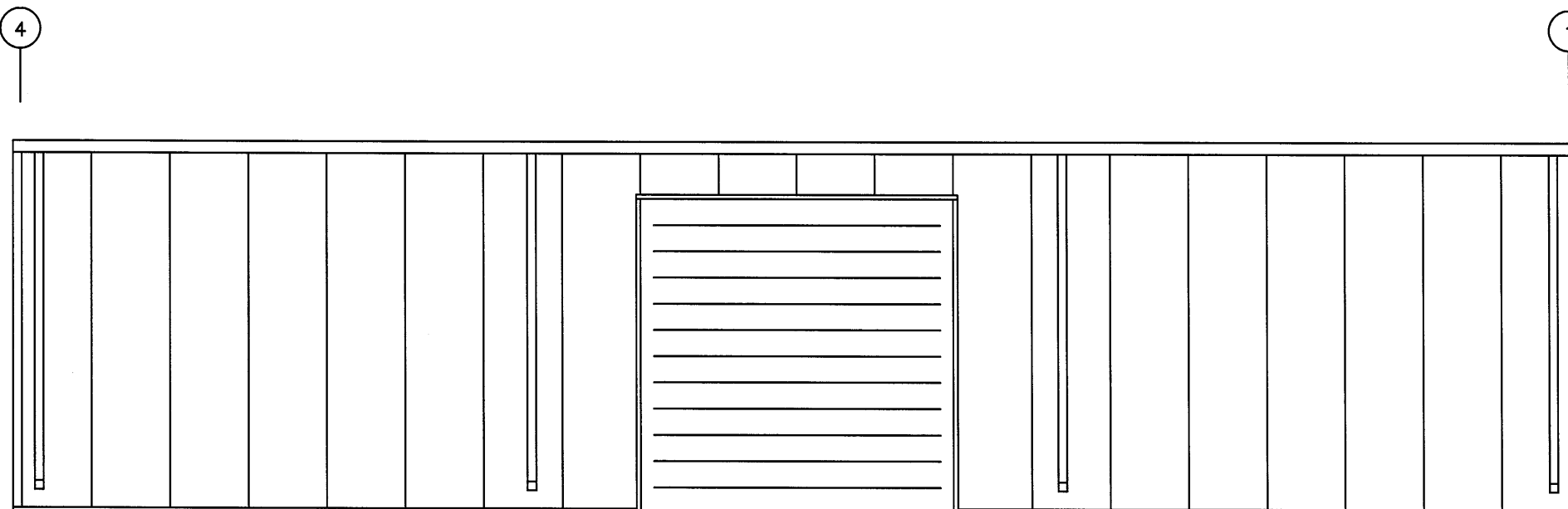




12 x 12 ROLL-UP DOOR  
(TYPICAL, UNLESS NOTED.)

3070 WALK-IN DOOR

SIDEWALL FRAMING ELEV. @ COL. LINE A  
N.T.S.



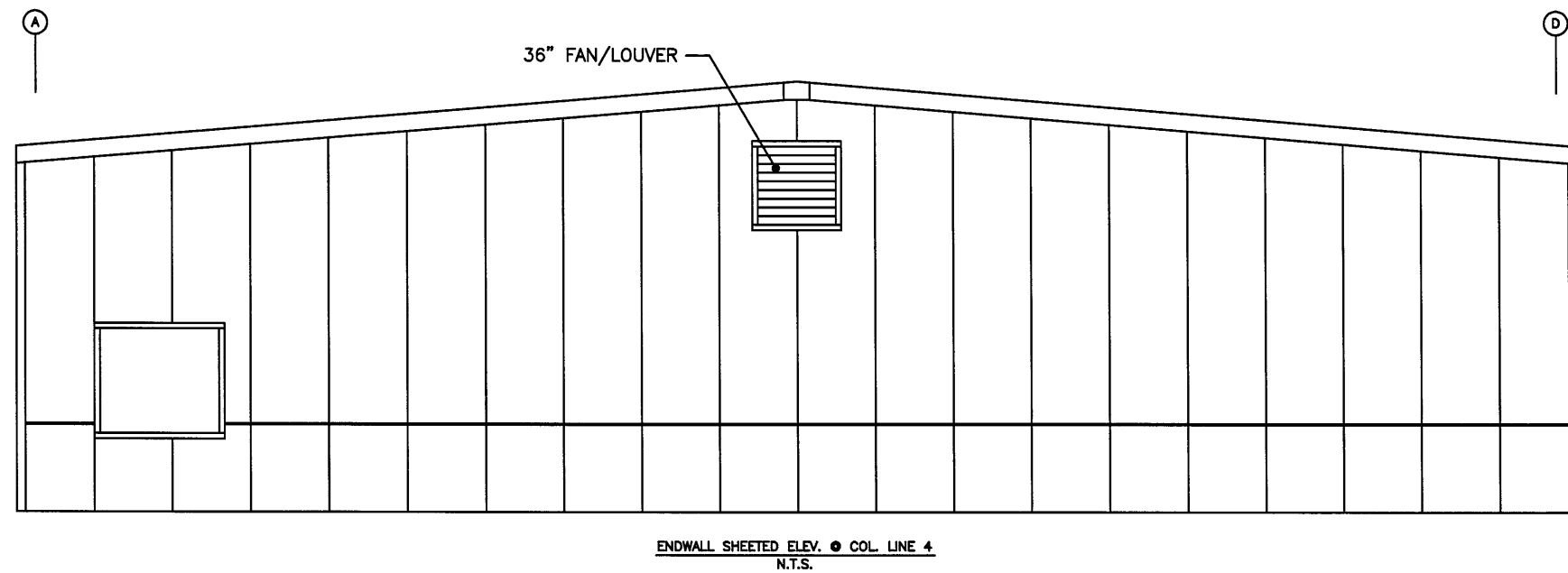
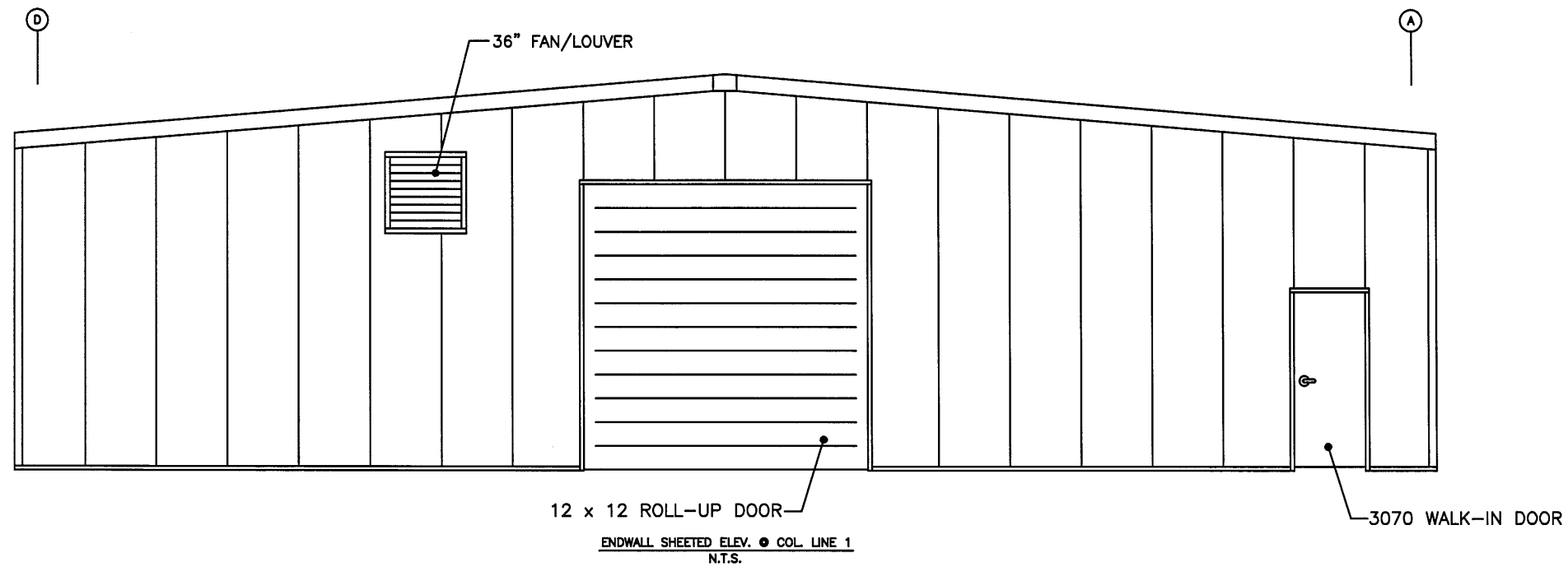
SIDEWALL SHEETED ELEV. @ COL. LINE D  
N.T.S.



**STEEL BUILDINGS**

VALOR STEEL BUILDINGS  
590 US HWY 98 - SUITE 3  
DAPHNE, AL 36526  
LOCAL (251) 379-8042  
TOLL FREE (855) 55-VALOR  
[www.valorsteelbuildings.com](http://www.valorsteelbuildings.com)

Bldg. Size: 60 x 60 x 14



VALOR STEEL BUILDINGS  
590 US HWY 98 - SUITE 3  
DAPHNE, AL 36526  
LOCAL (251) 379-8042  
TOLL FREE (855) 55-VALOR  
www.valorsteelbuildings.com

Bldg. Size: 60 x 60 x 14

Sht. SH3of3