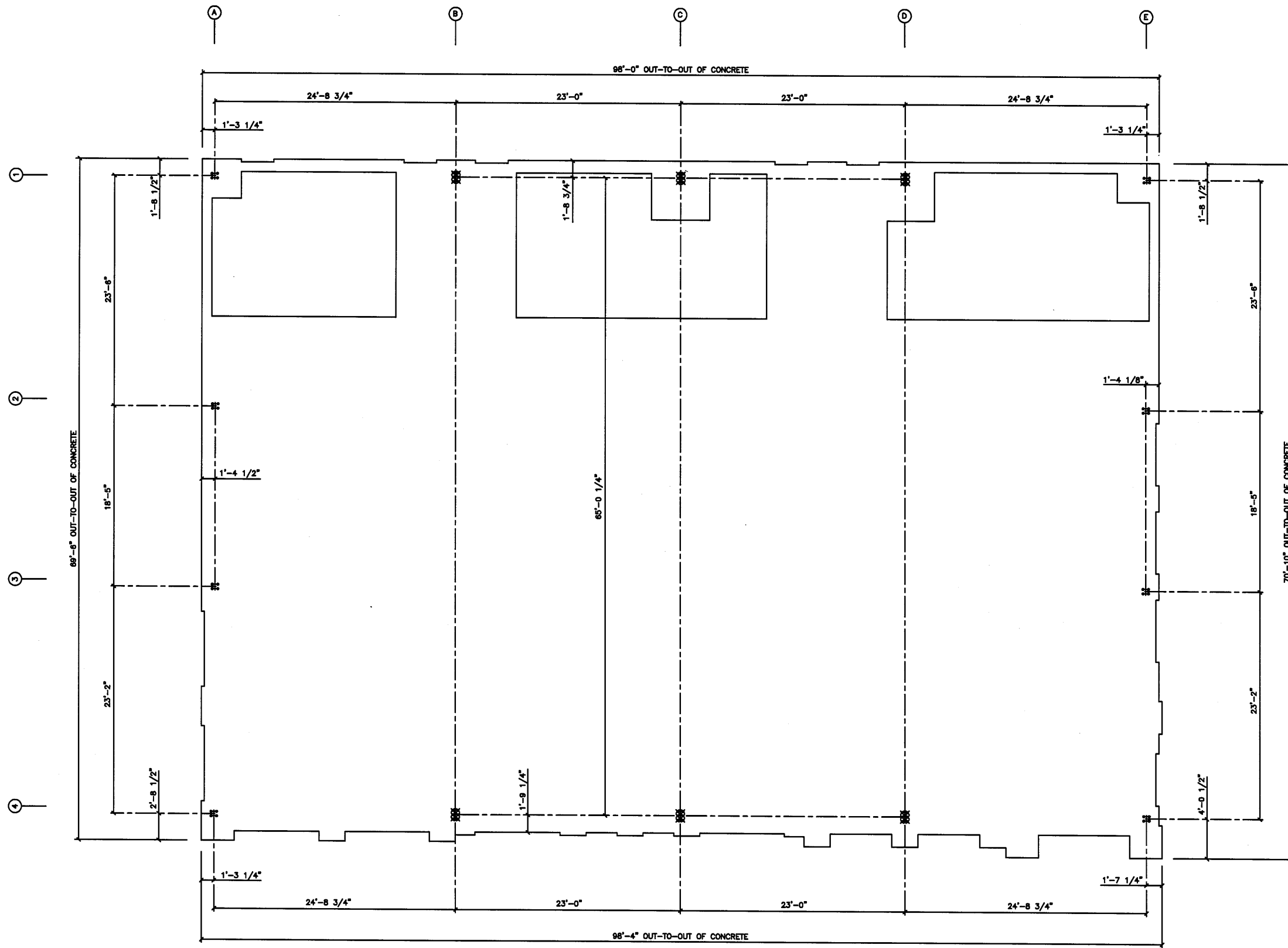


BLDG. SIZE: 66'-11" x 95'-11" x 17'-4" L.S.
(1/2" : 12 PITCH)

AB1 of 1 — Anchor Bolt Plan
F1 of 1 — Foundation Plan
1 of 3 — Roof Framing Plan
2 of 3 — Sidewall Framing Elev.
3 of 3 — Endwall & Rigid Framing Elev.
SH1 of 2 — Roof Sheeting Plan
SH2 of 2 — Endwall & High Sidewall Back-Sheeting Elev.



590 US HWY 98
SUITE 3
DAPHNE, AL 36526
LOCAL (251) 379-8042
TOLL FREE (855) 55-VALOR
www.valorsteelbuildings.com

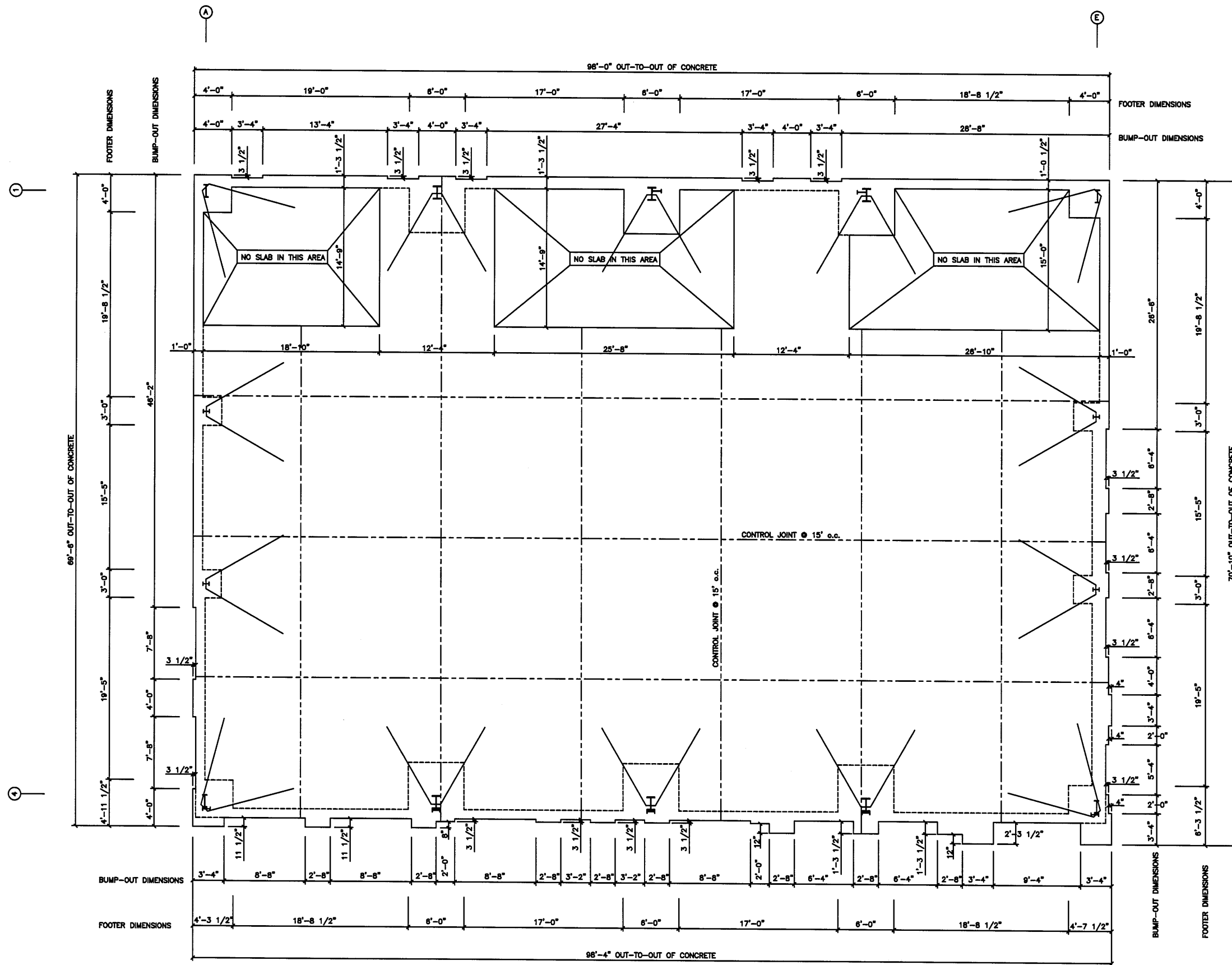


ANCHOR BOLT PLAN
N.T.S.

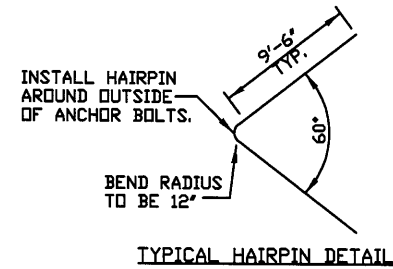


VALOR STEEL BUILDINGS
590 US HWY 98 - SUITE 3
DAPHNE, AL 36526
LOCAL (251) 379-8042
TOLL FREE (855) 55-VALOR
www.valorsteelbuildings.com

Bldg. Size: 69'-6" x 98'



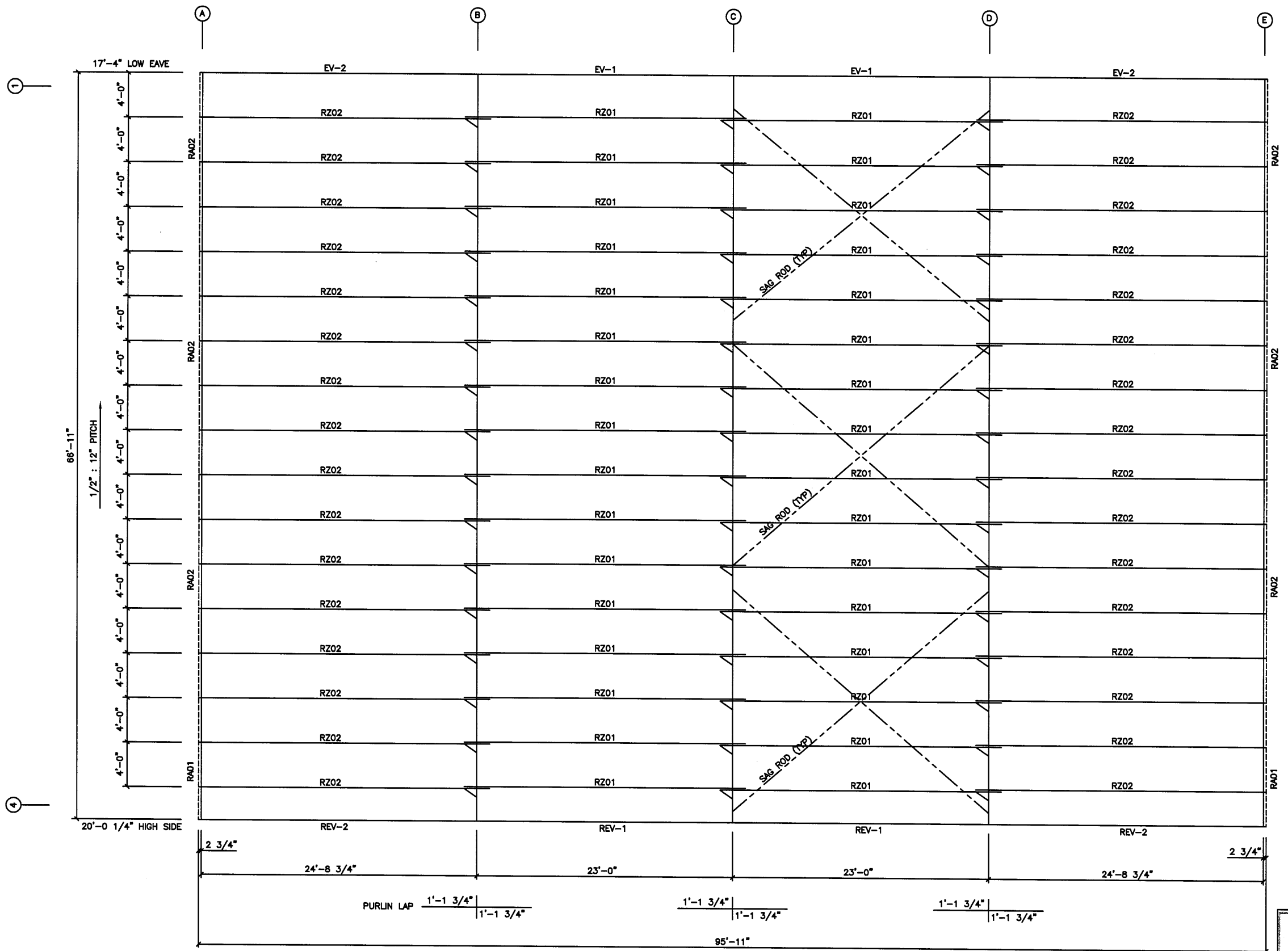
FOUNDATION PLAN
N.T.S.



	STEEL BUILDINGS
	VALOR STEEL BUILDINGS 590 US HWY 98 - SUITE 3 DAPHNE, AL 36526 LOCAL (251) 379-8042 TOLL FREE (855) 55-VALOR www.valorsteelbuildings.com

Bldg. Size: 69'-6" x 98'

Sht. F1 of 2

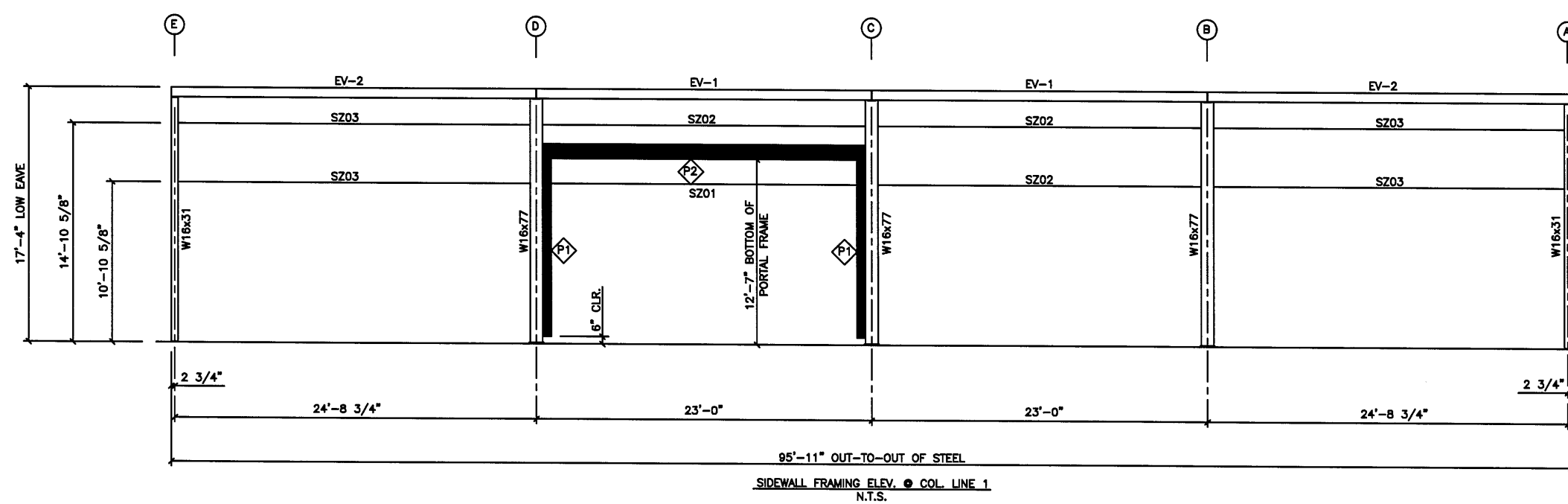
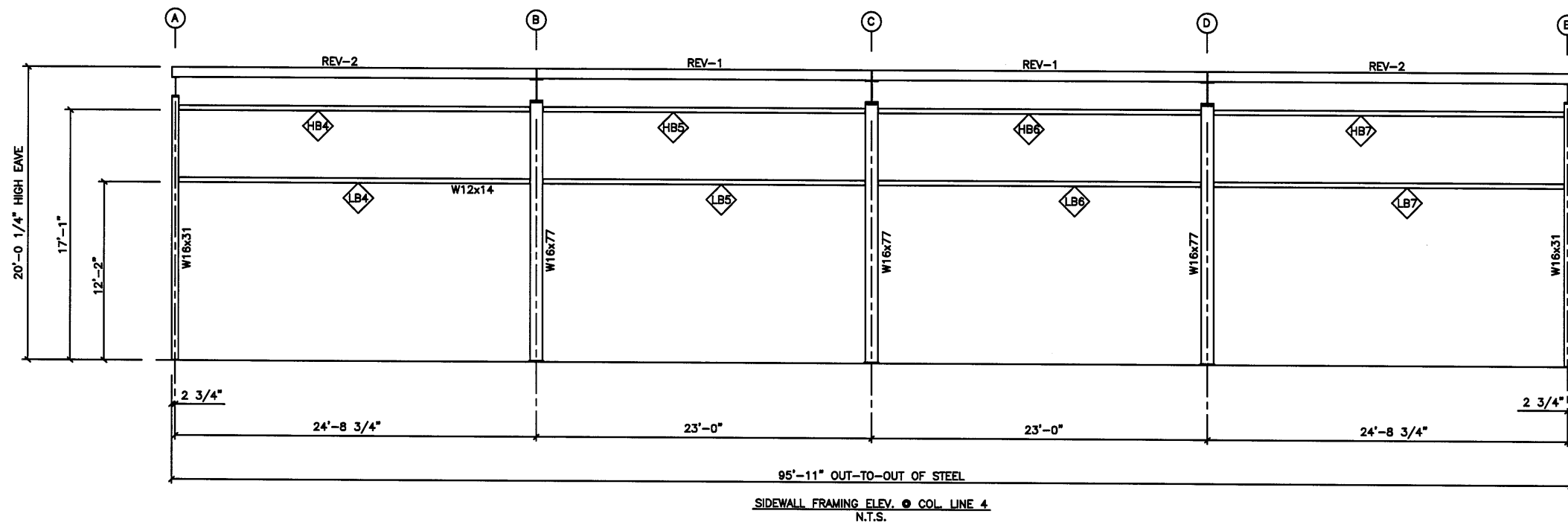
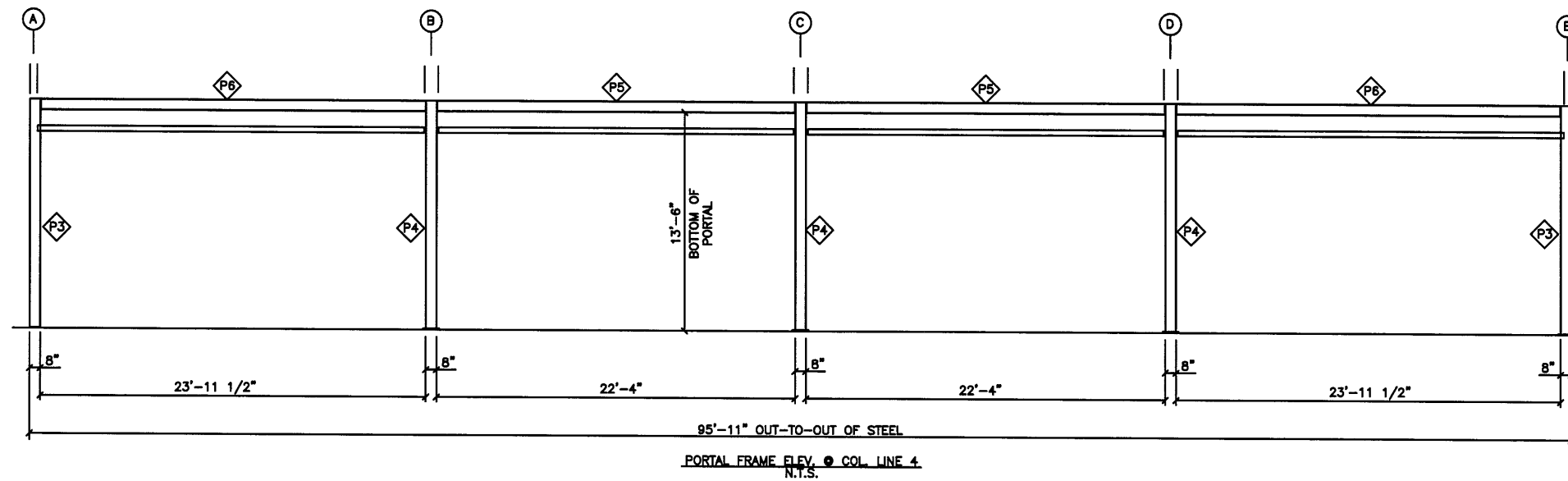


ROOF FRAMING PLAN
N.T.S.



VALOR STEEL BUILDINGS
590 US HWY 98 - SUITE 3
DAPHNE, AL 36526
LOCAL (251) 379-8042
TOLL FREE (855) 55-VALOR
www.valorsteelbuildings.com

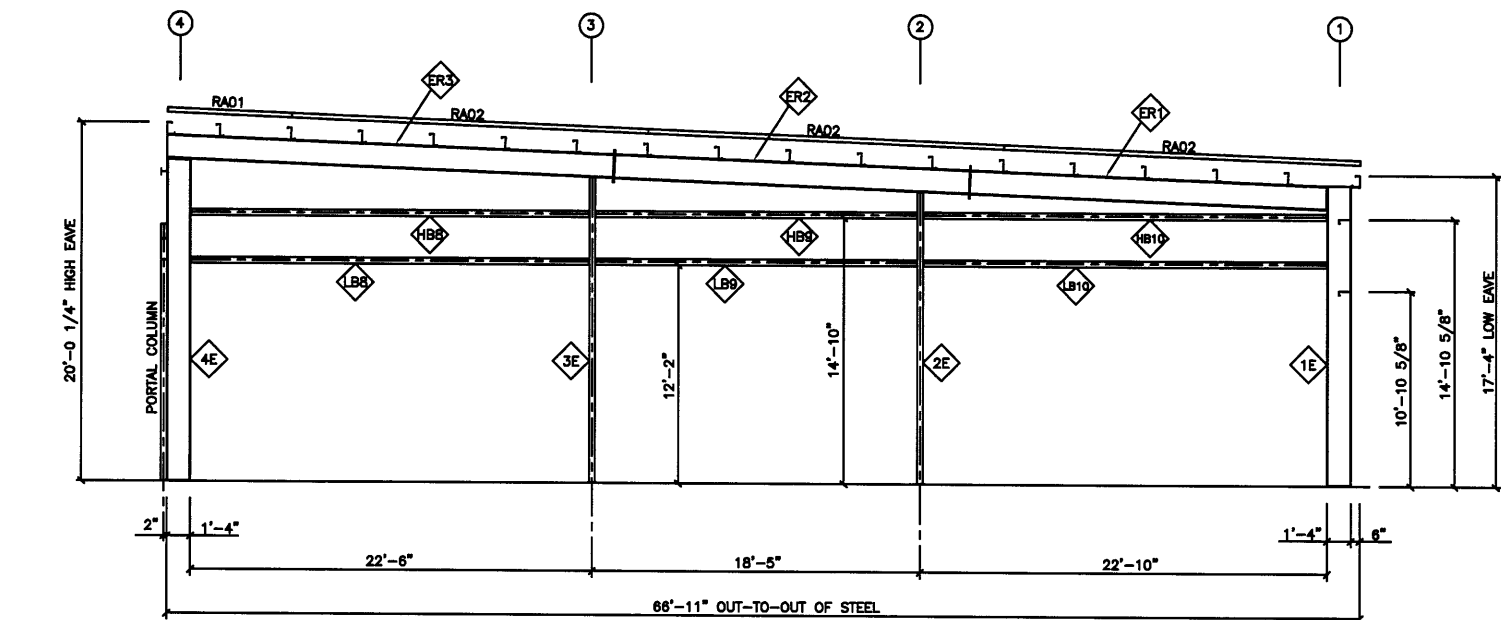
Bldg. Size: 69'-6" x 98'



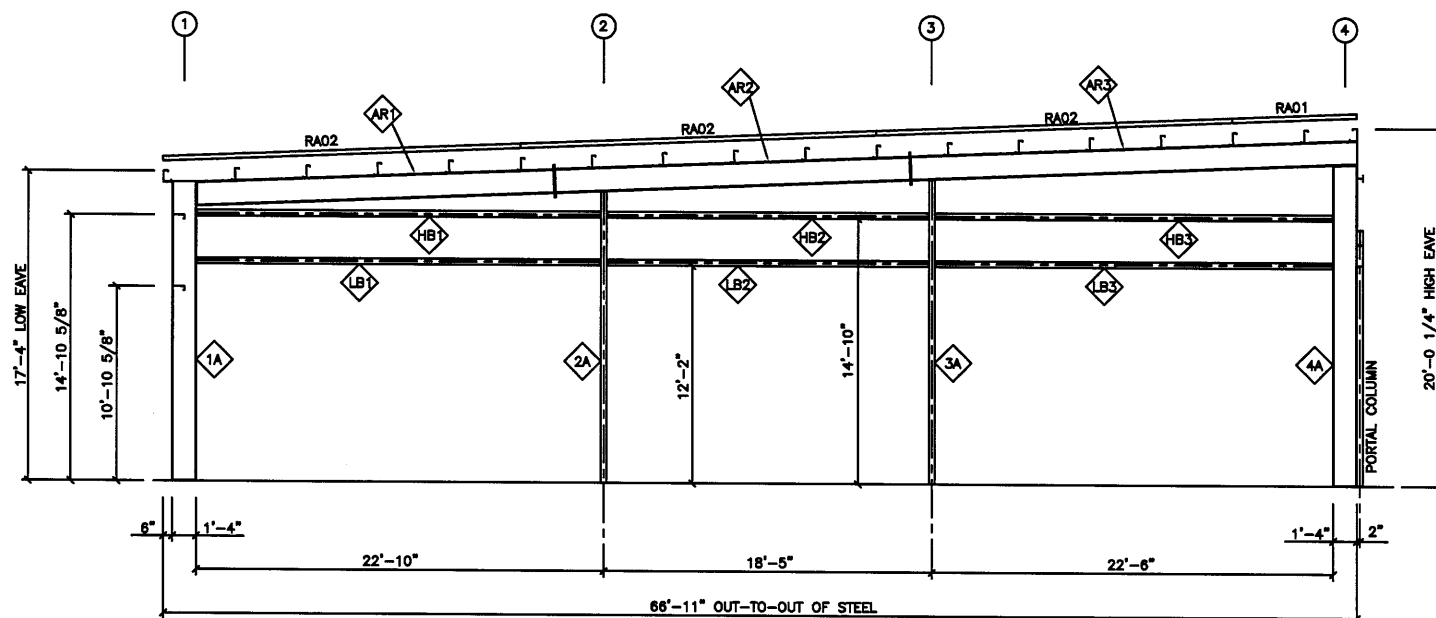

VALOR STEEL BUILDINGS
 590 US HWY 98 - SUITE 3
 DAPHNE, AL 36526
 LOCAL (251) 379-8042
 TOLL FREE (855) 55-VALOR
 www.valorsteelbuildings.com

Bldg. Size: 69'-6" x 98'

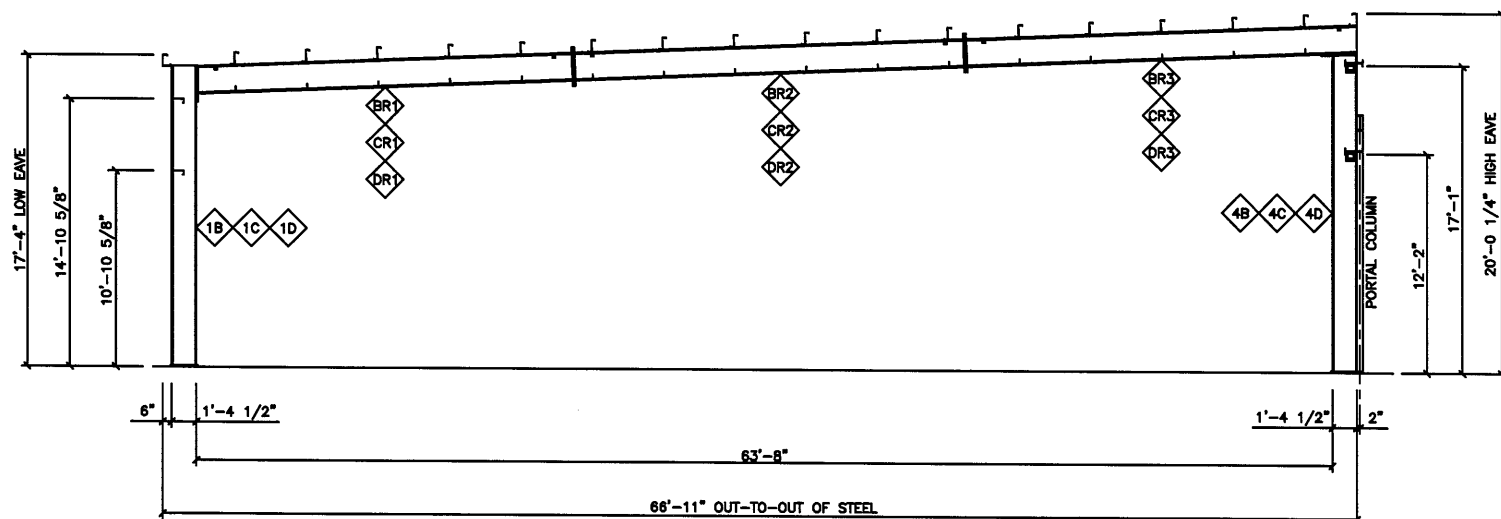
Sht. 2 of 3



ENDWALL FRAMING ELEV. @ COL. LINE E
N.T.S.



ENDWALL FRAMING ELEV. @ COL. LINE A
N.T.S.



RIGID FRAMING ELEV. TYP. COL. LINES: B, C, D
N.T.S.



VALOR STEEL BUILDINGS
590 US HWY 98 - SUITE 3
DAPHNE, AL 36526
LOCAL (251) 379-8042
TOLL FREE (855) 55-VALOR
www.valorsteelbuildings.com

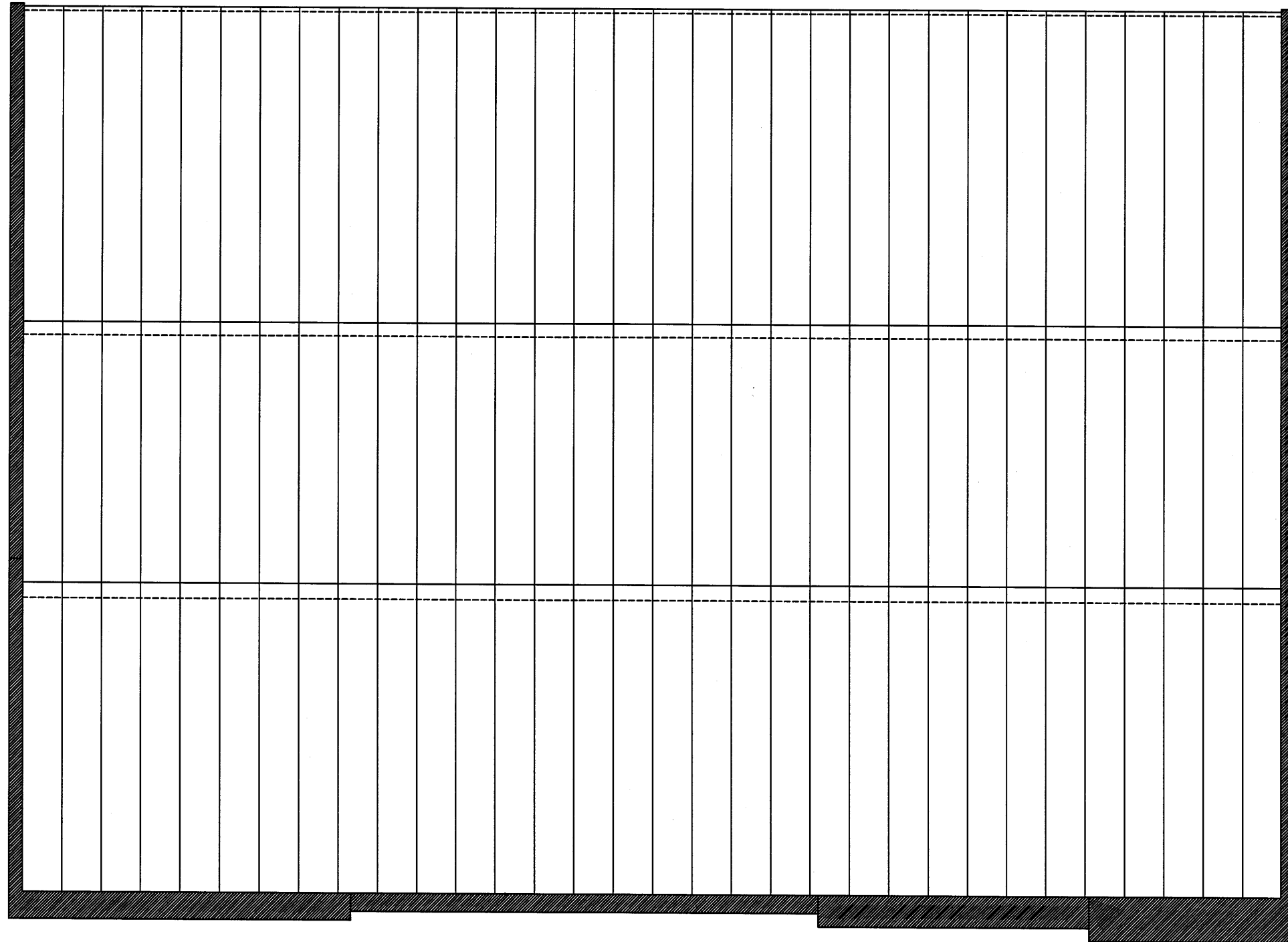
Bldg. Size: 69'-6" x 98'

A

E

1

2



ROOF SHEETING PLAN
N.T.S.



VALOR STEEL BUILDINGS
 590 US HWY 98 - SUITE 3
 DAPHNE, AL 36526
 LOCAL (251) 379-8042
 TOLL FREE (855) 55-VALOR
www.valorsteelbuildings.com

Bldg. Size: 69'-6" x 98'

Sht. SH1 of 2